



Stockholms  
universitet

# Arctic Climate change

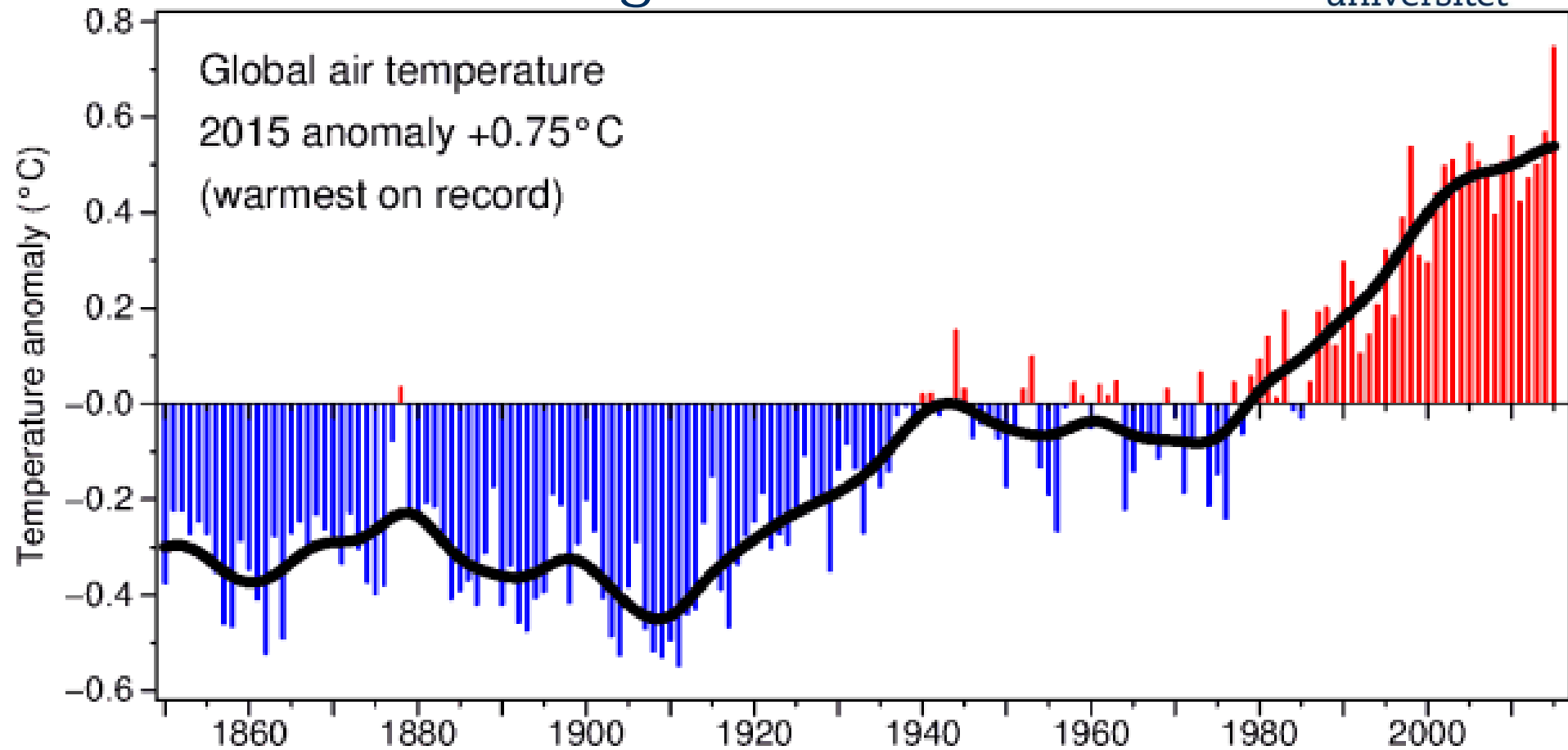
Michael Tjernström

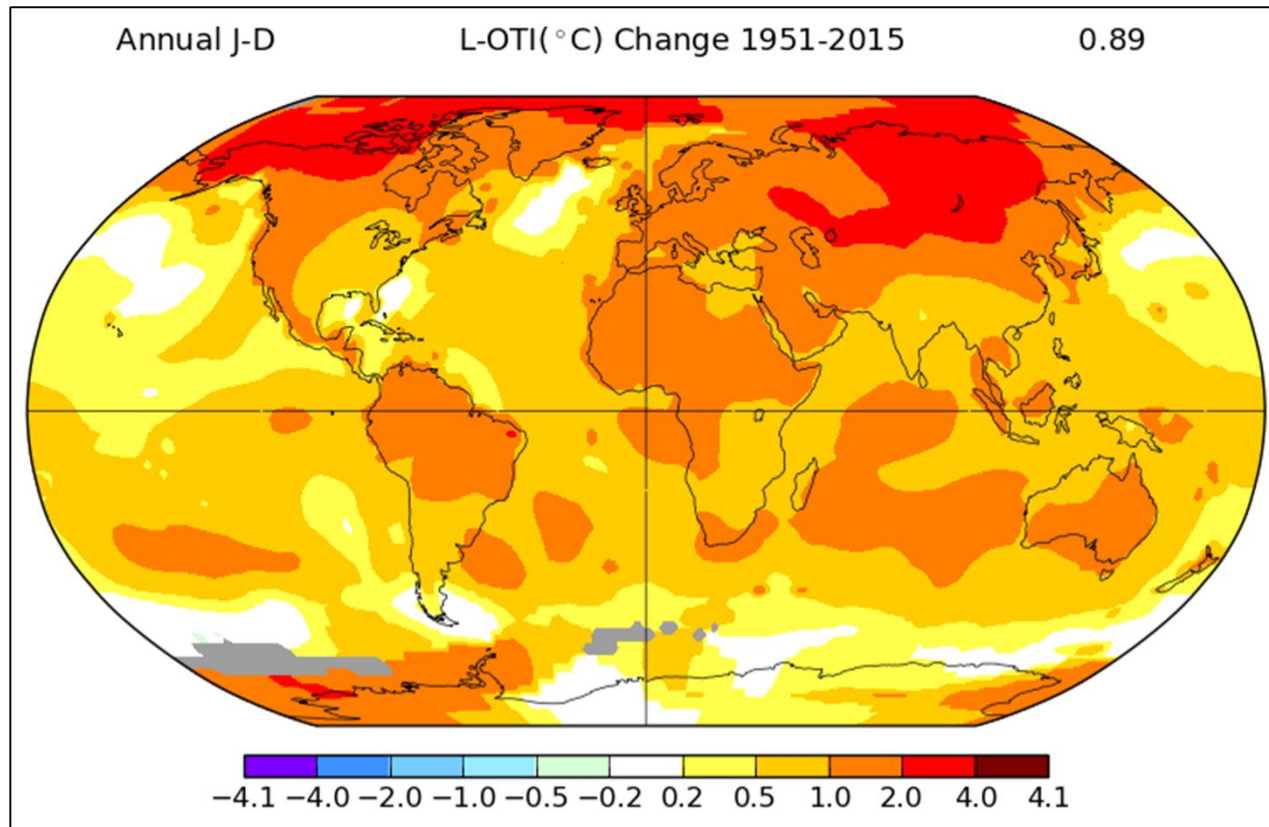
Department of Meteorology & Bolin Centre for Climate Research  
Stockholm University, Stockholm, Sweden



Stockholms  
universitet

# Global warming

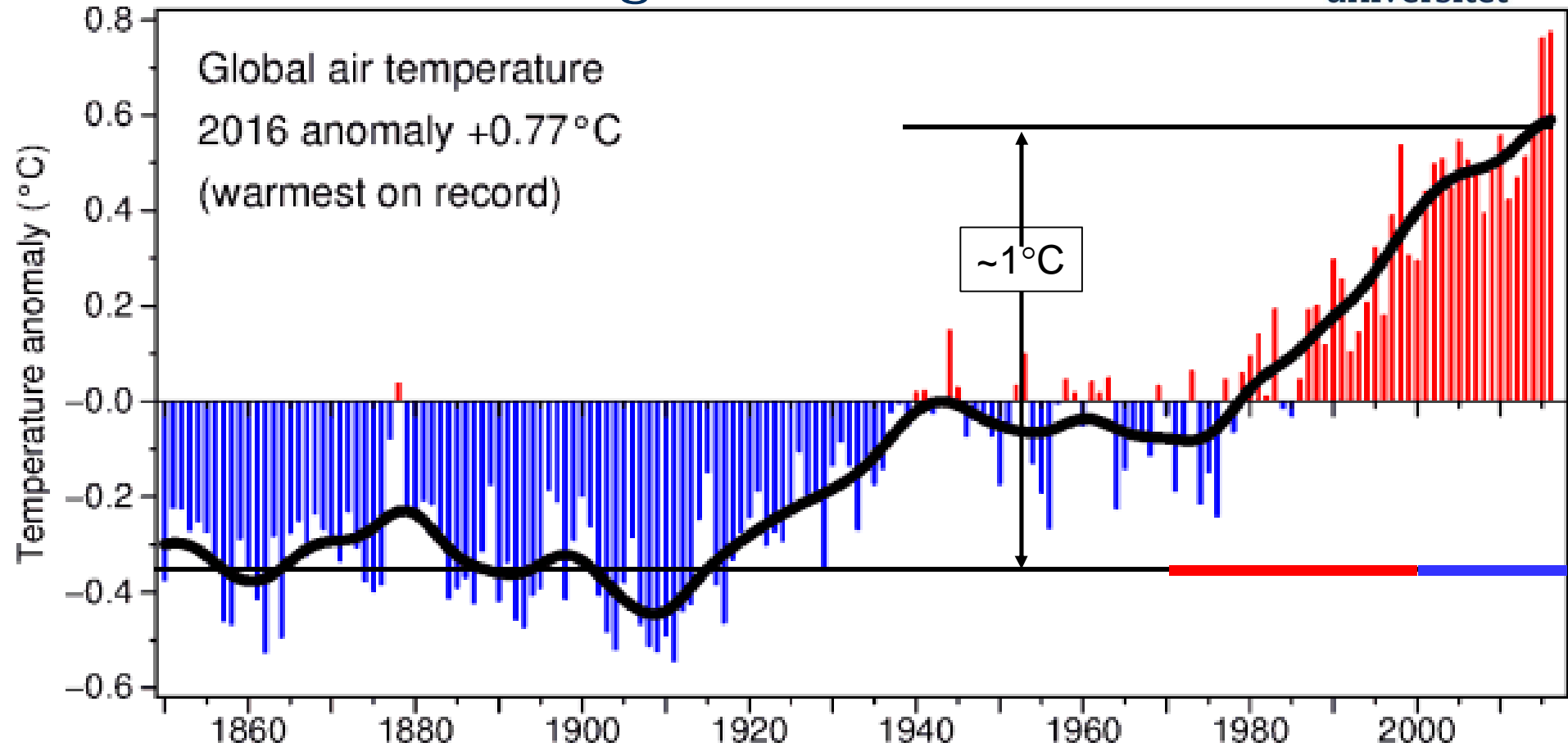


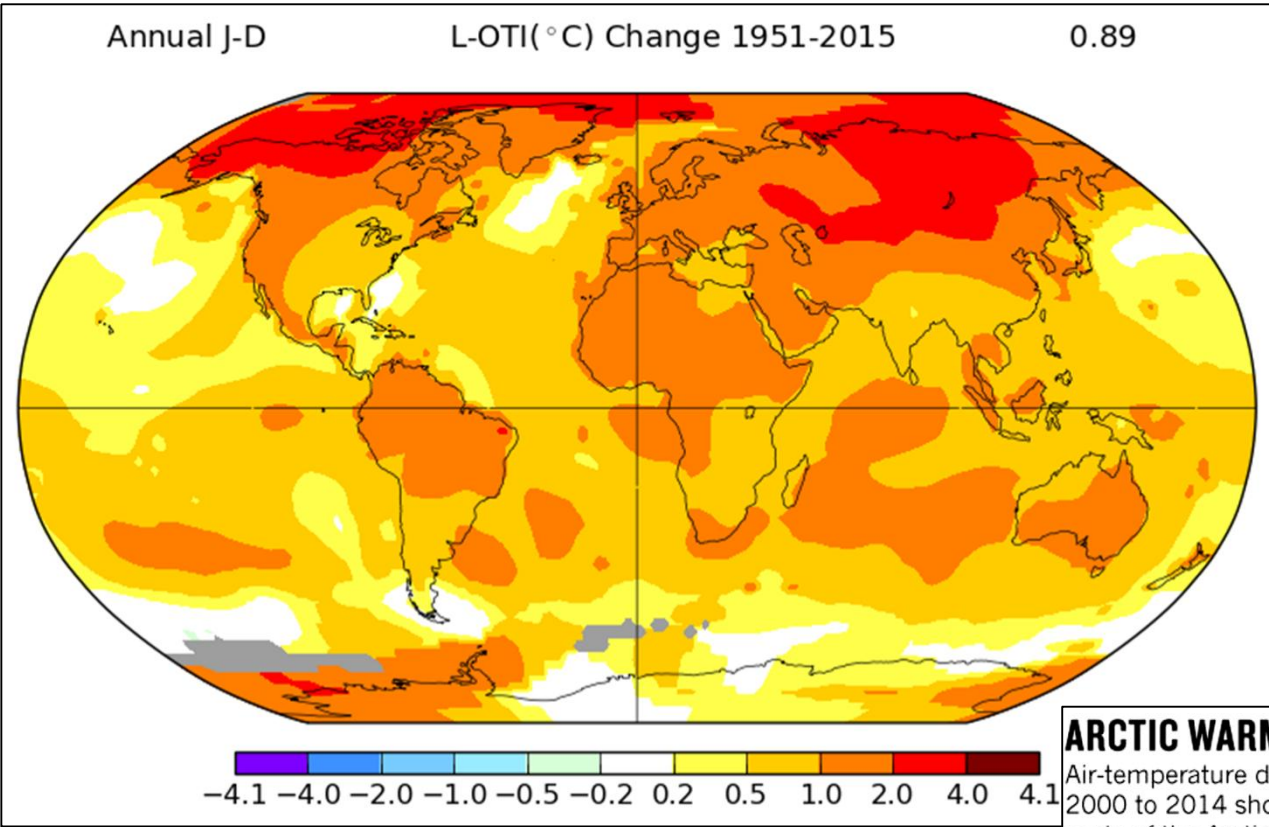


But global  
warming is not  
globally uniform!

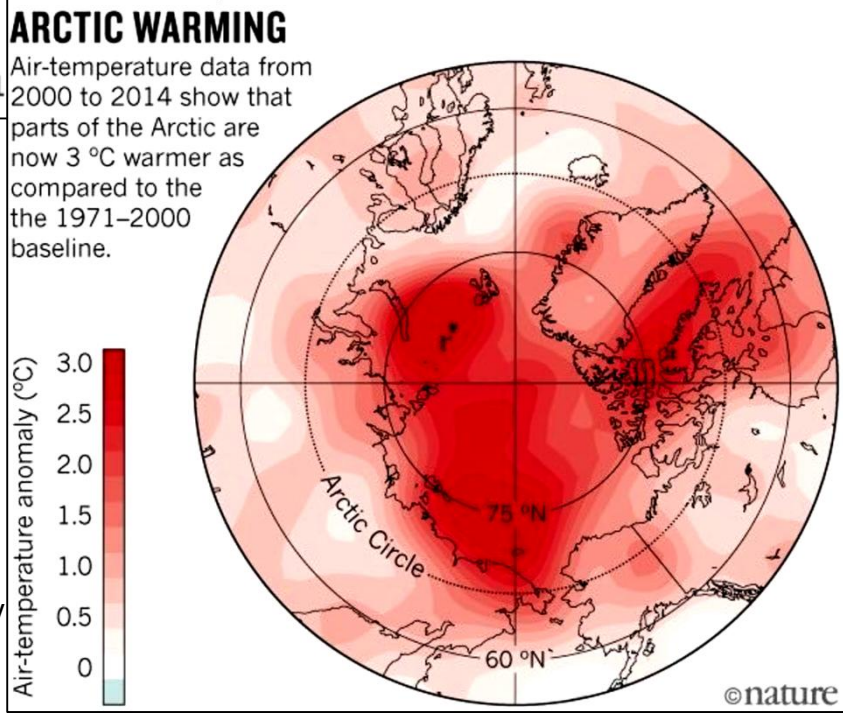


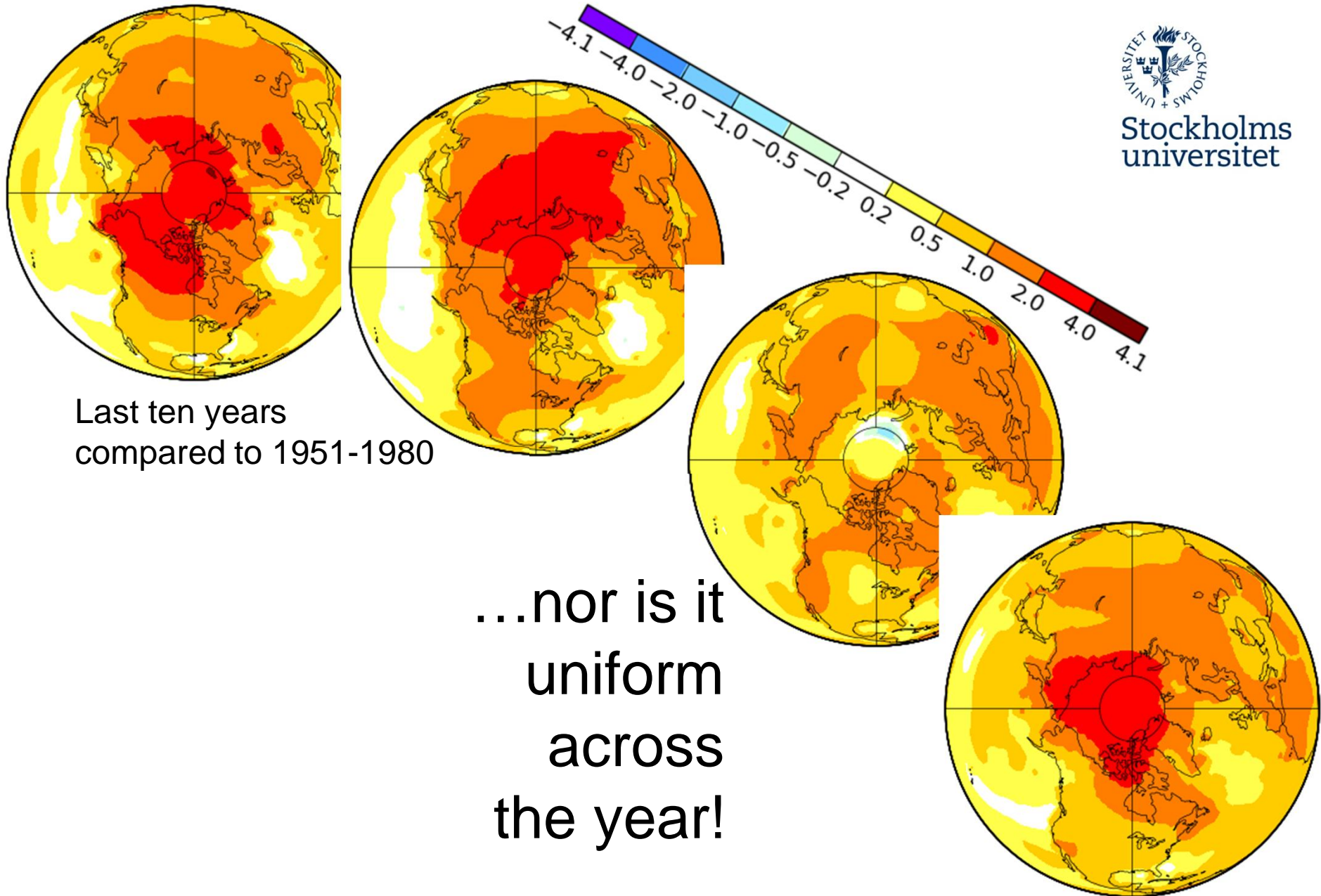
# Global warming





But global warming is not globally uniform!



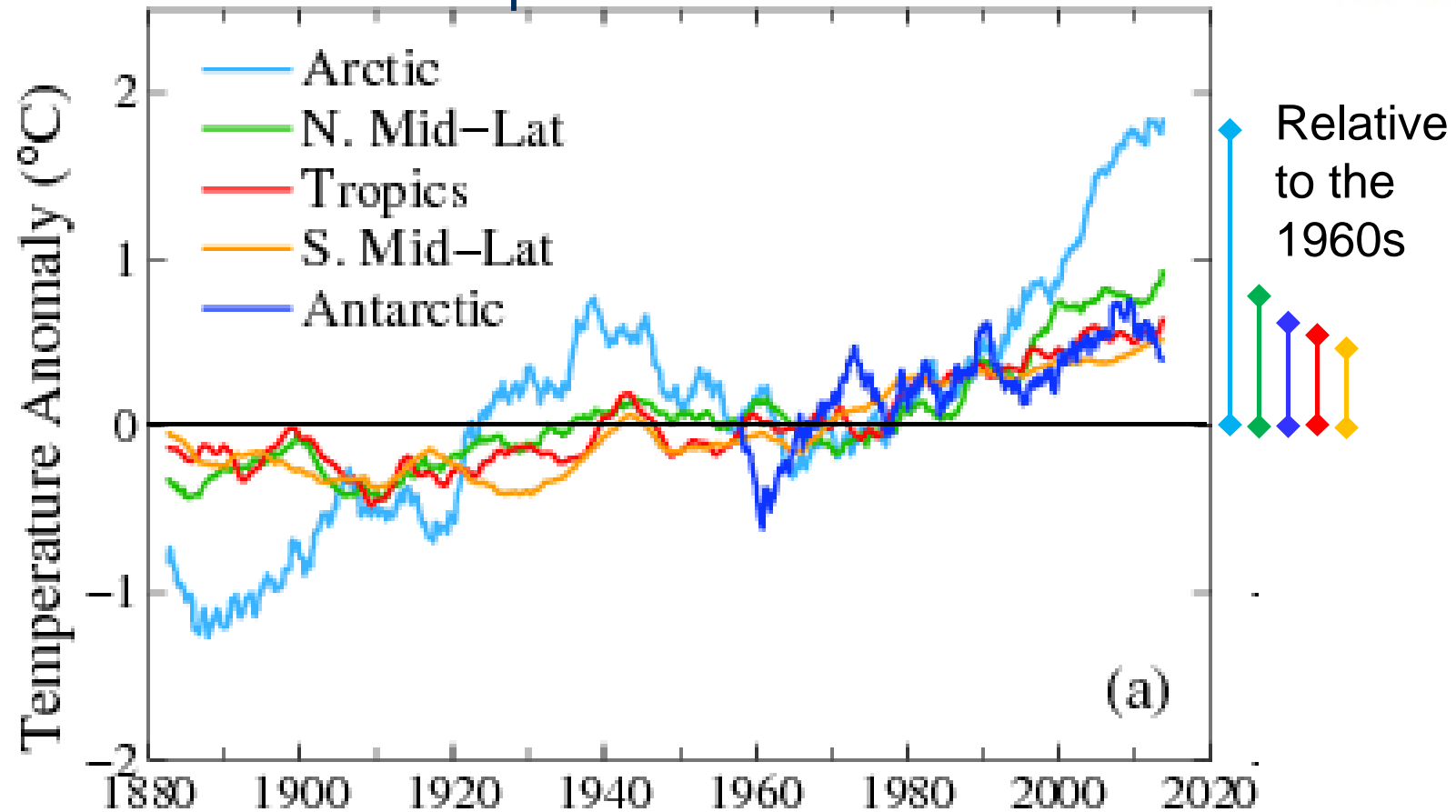


Last ten years  
compared to 1951-1980

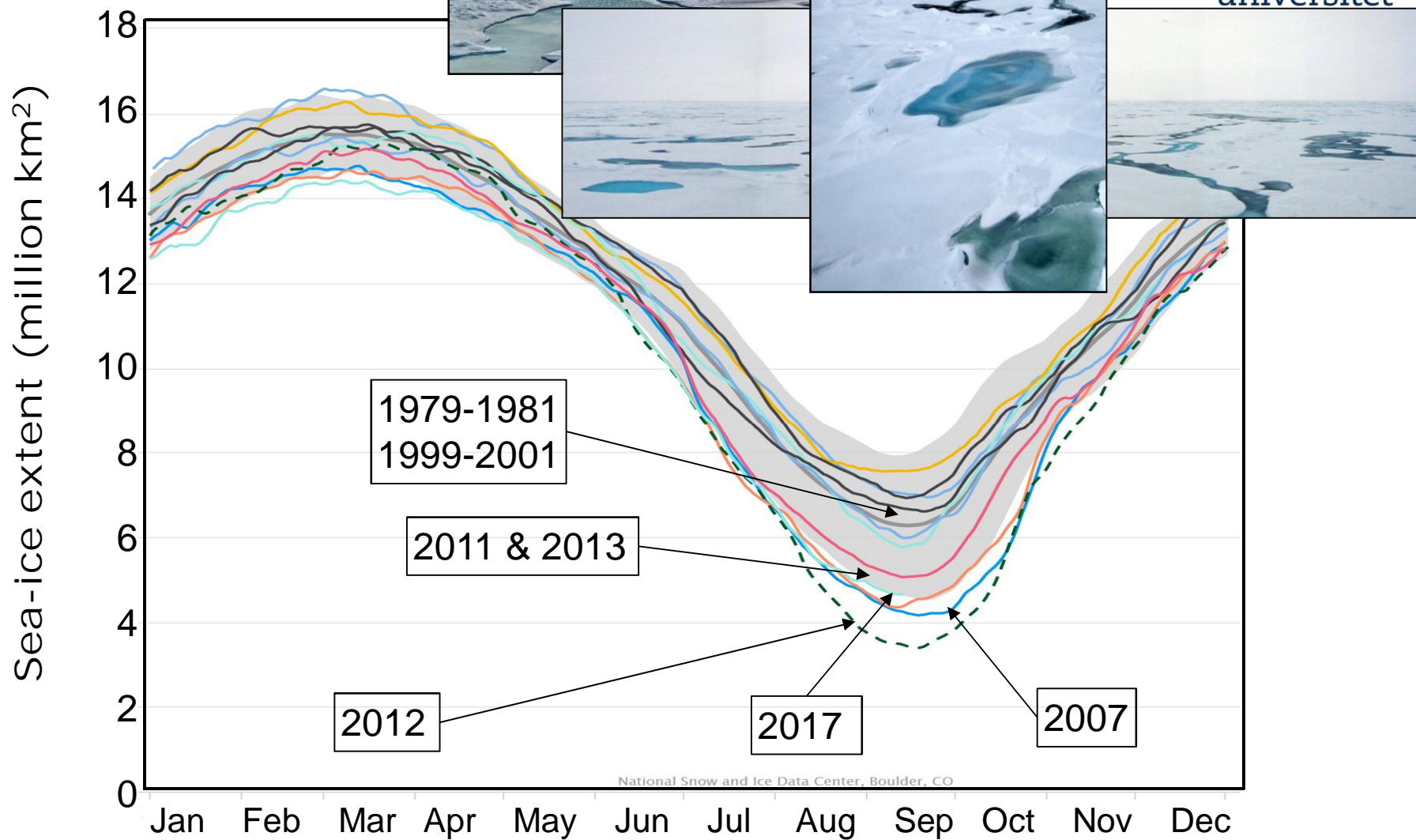
...nor is it  
uniform  
across  
the year!



## "Arctic amplification"

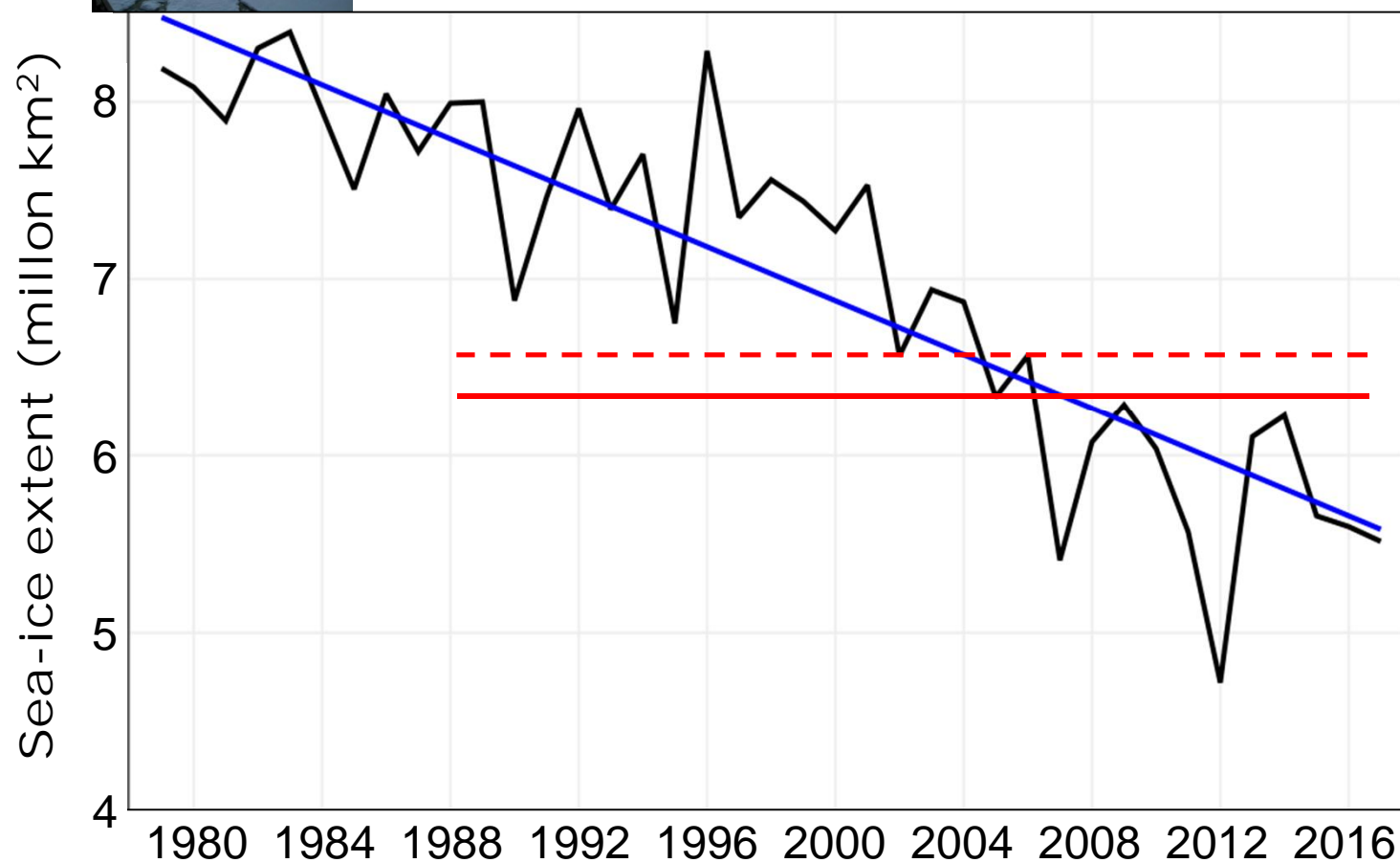


# Arctic sea-ice cover





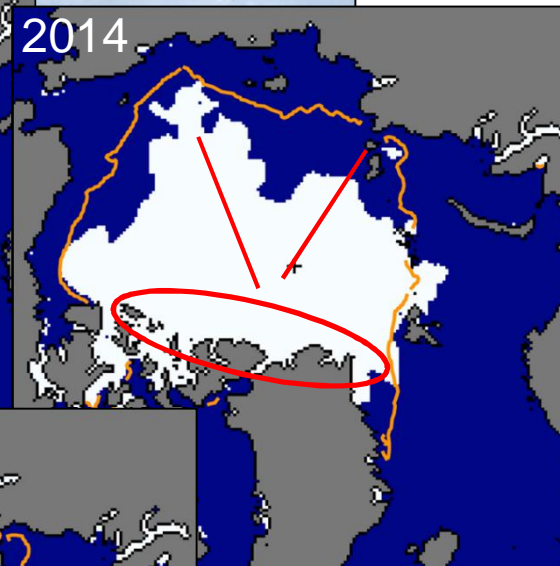
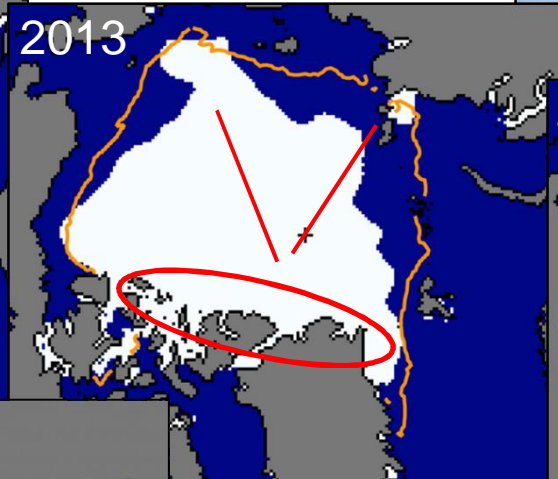
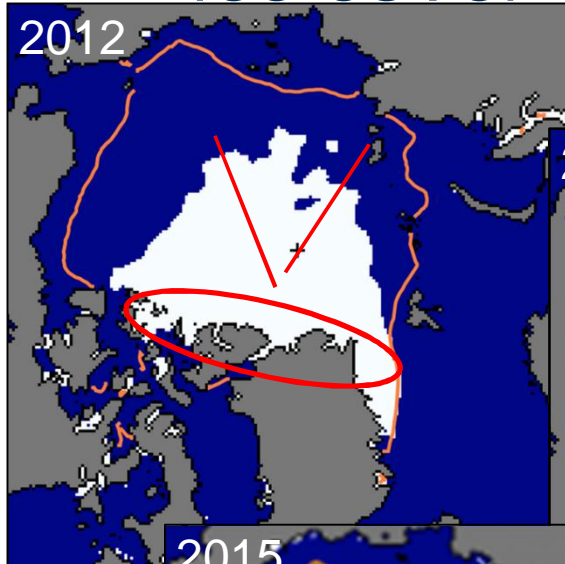
# The Arctic summer ice cover has decreased by ~40% since the 1970s



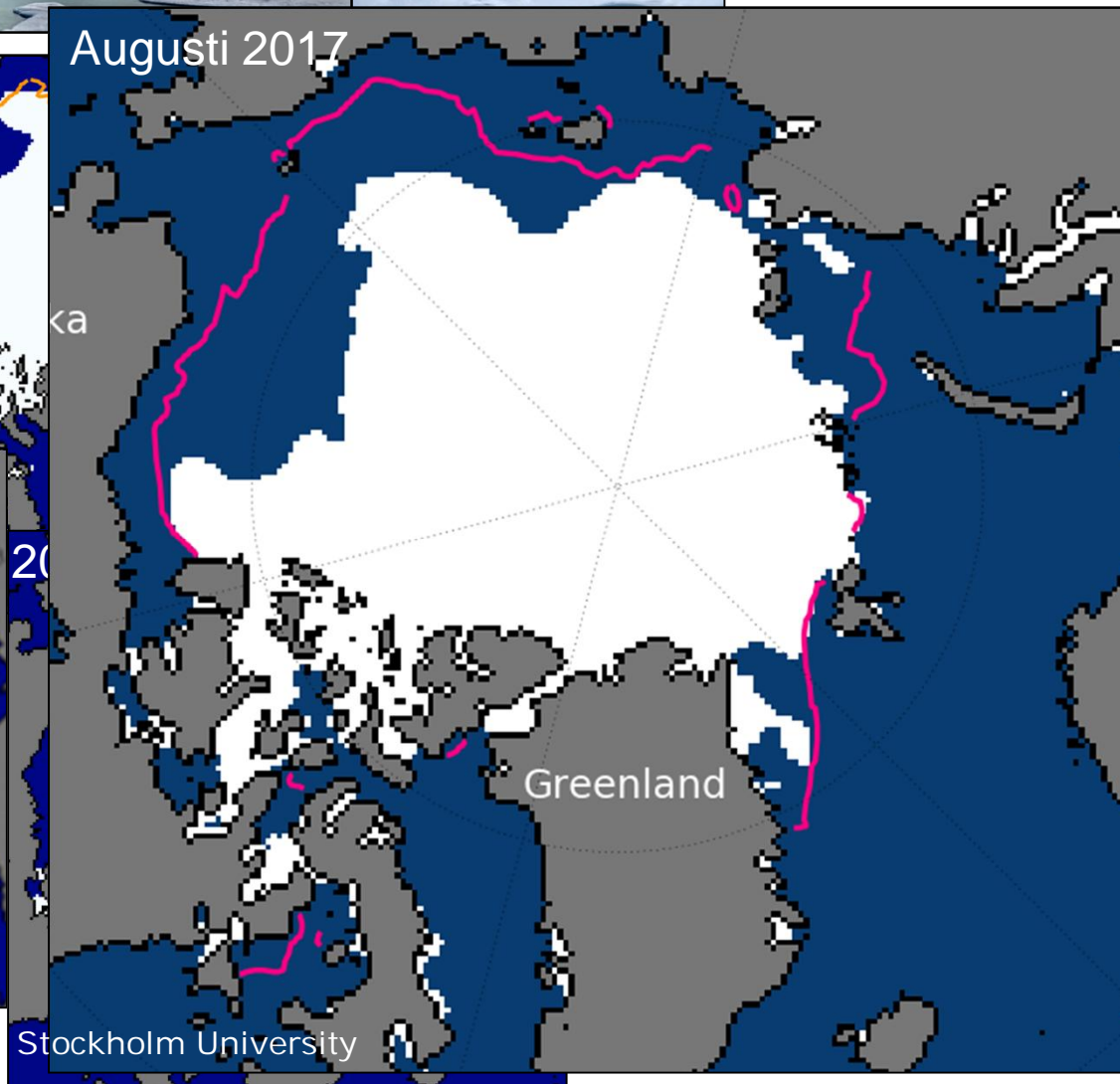
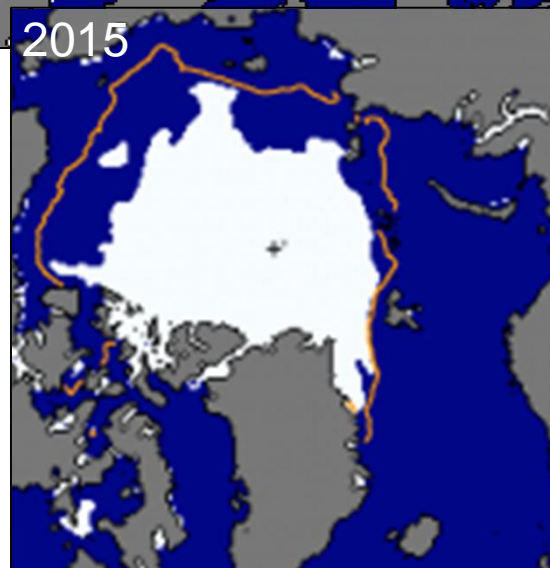
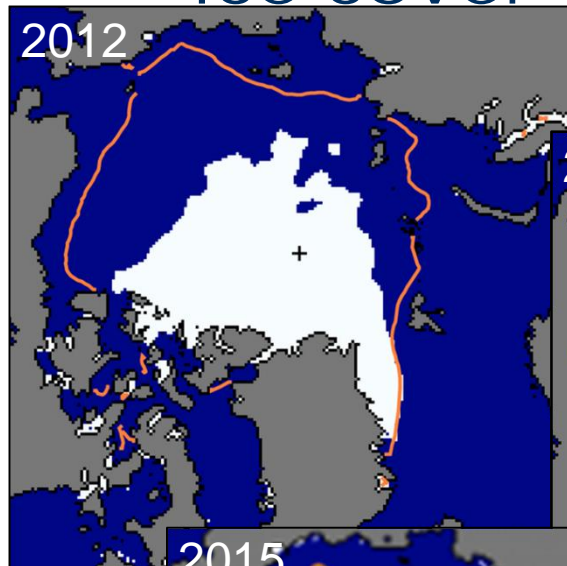
# Arctic sea-ice cover



Stockholms universitet



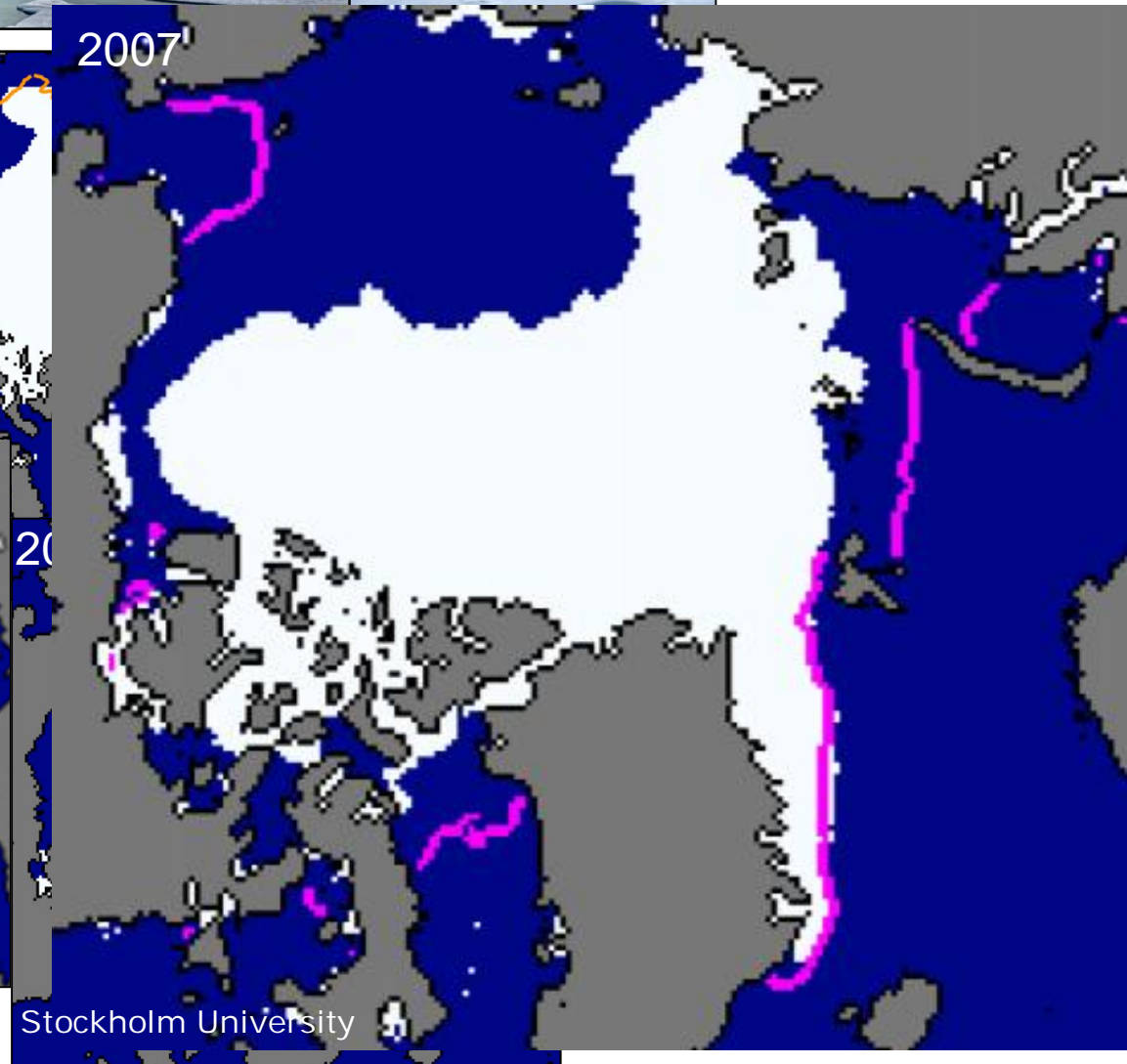
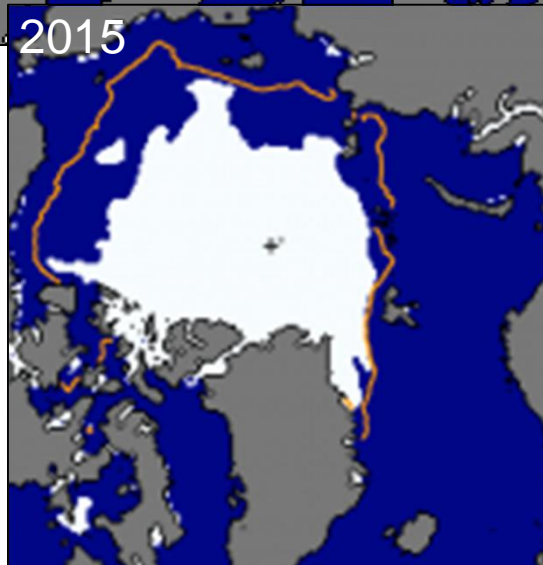
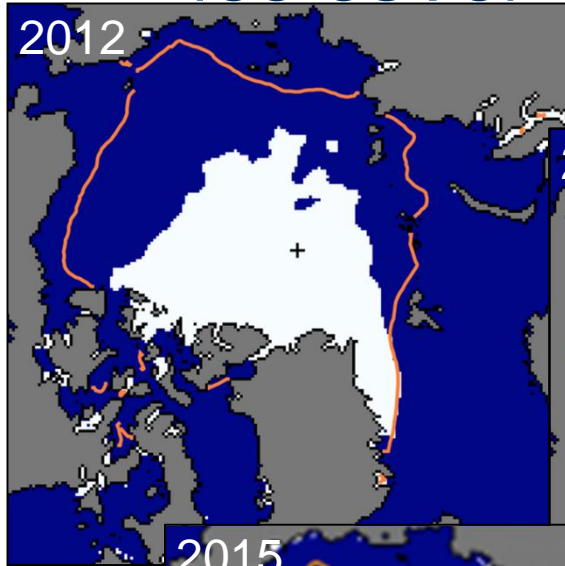
# Arctic sea-ice cover



# Arctic sea-ice cover



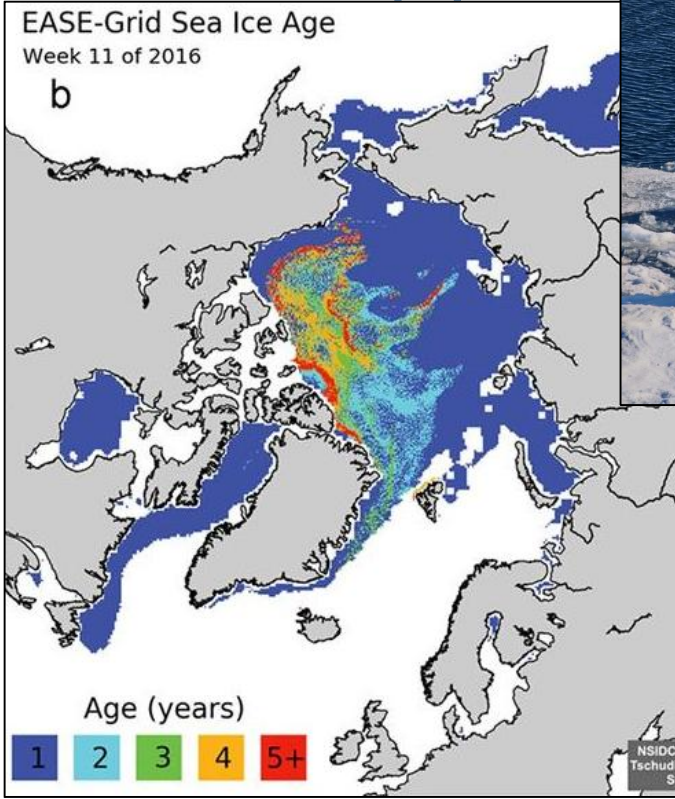
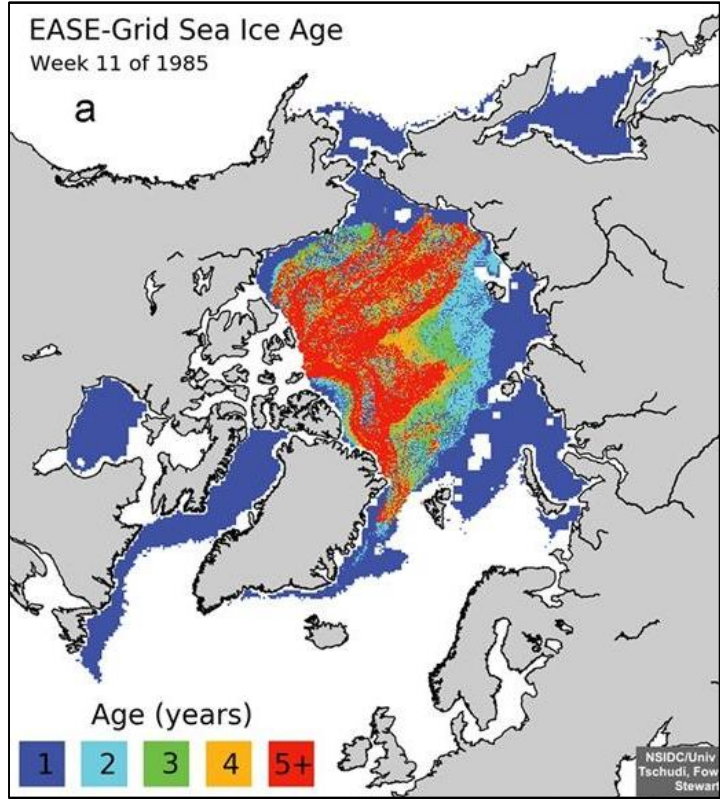
Stockholms universitet

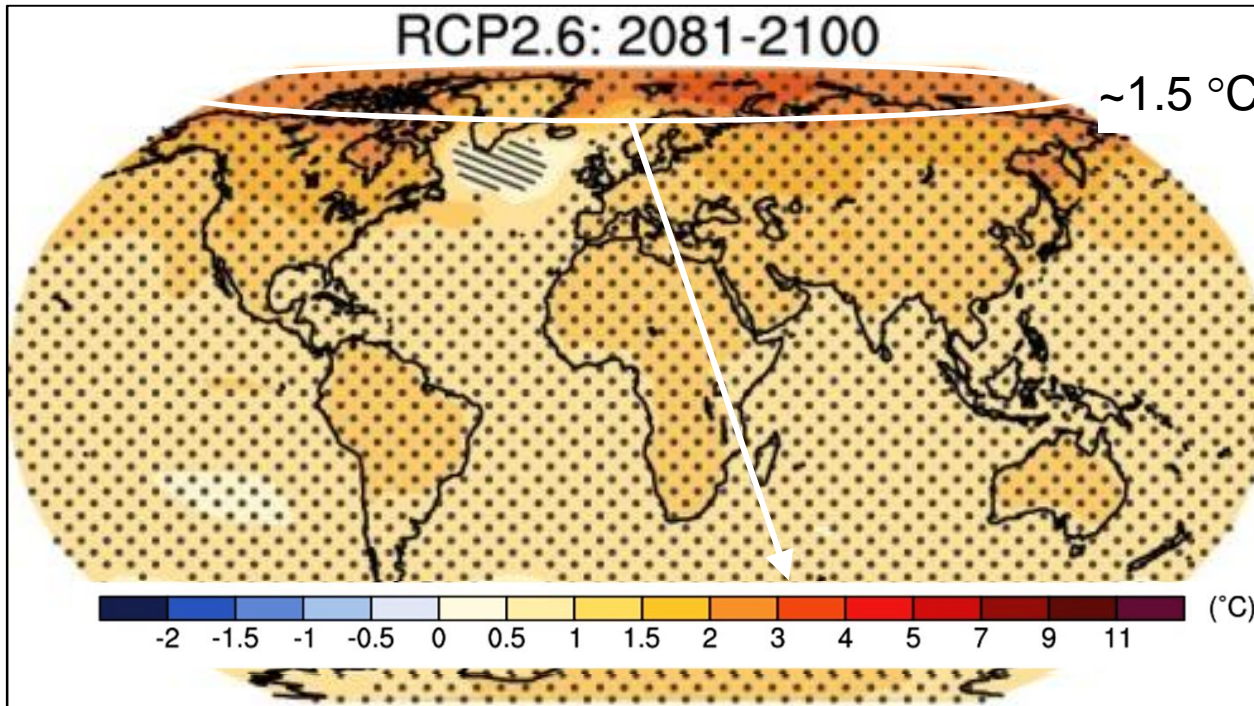




Stockholms universitet

# Thicker & older ice disappears fast

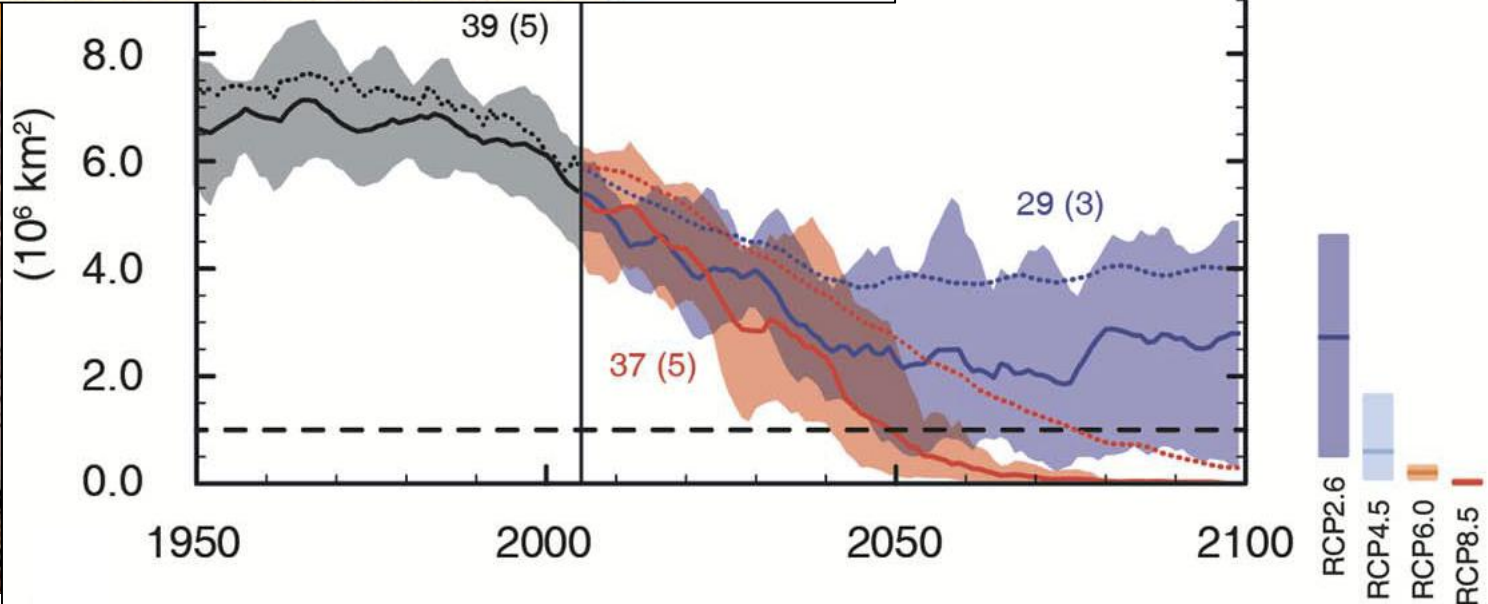


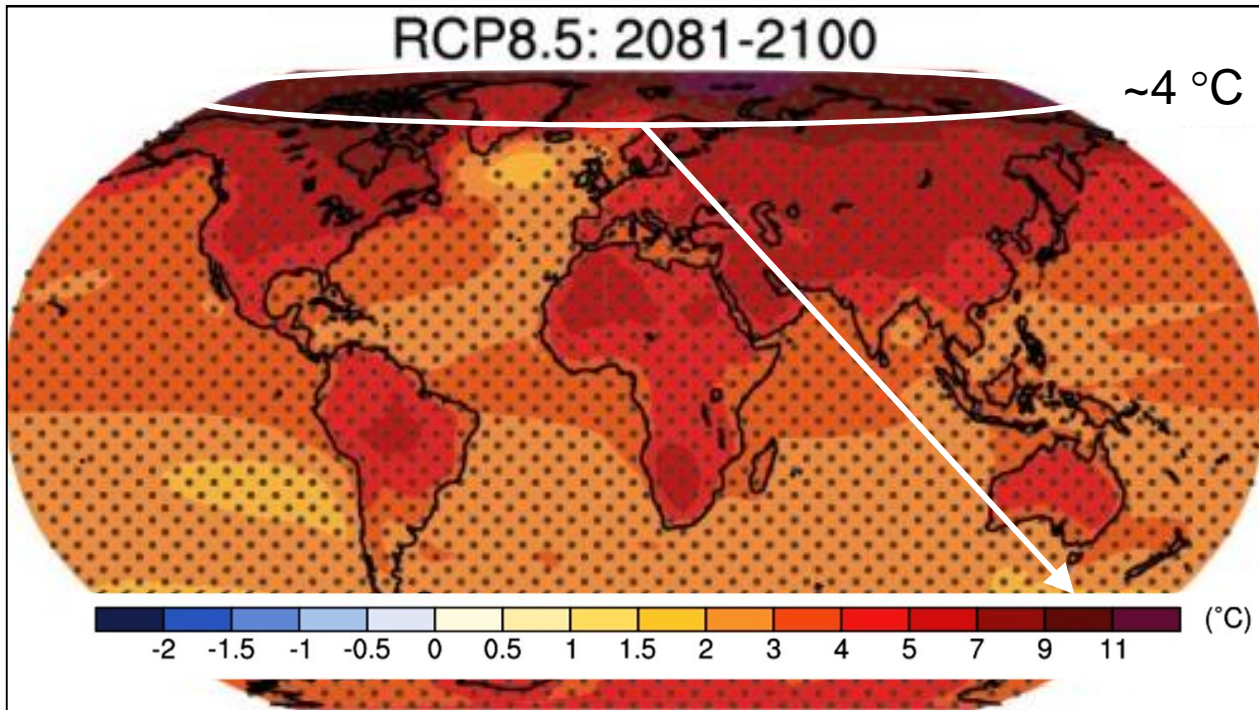


# What about the future?

STOCKHOLMS UNIVERSITET

Stockholms universitet

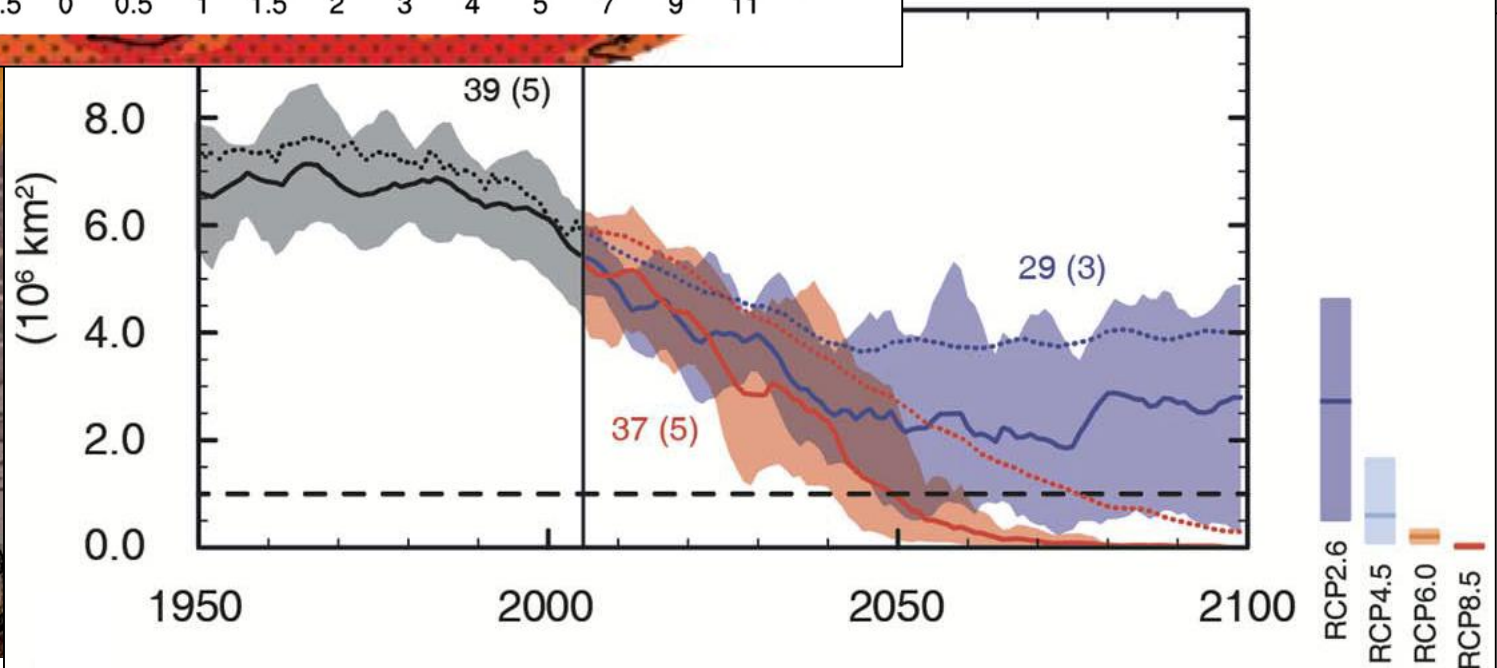




What  
about  
the future?

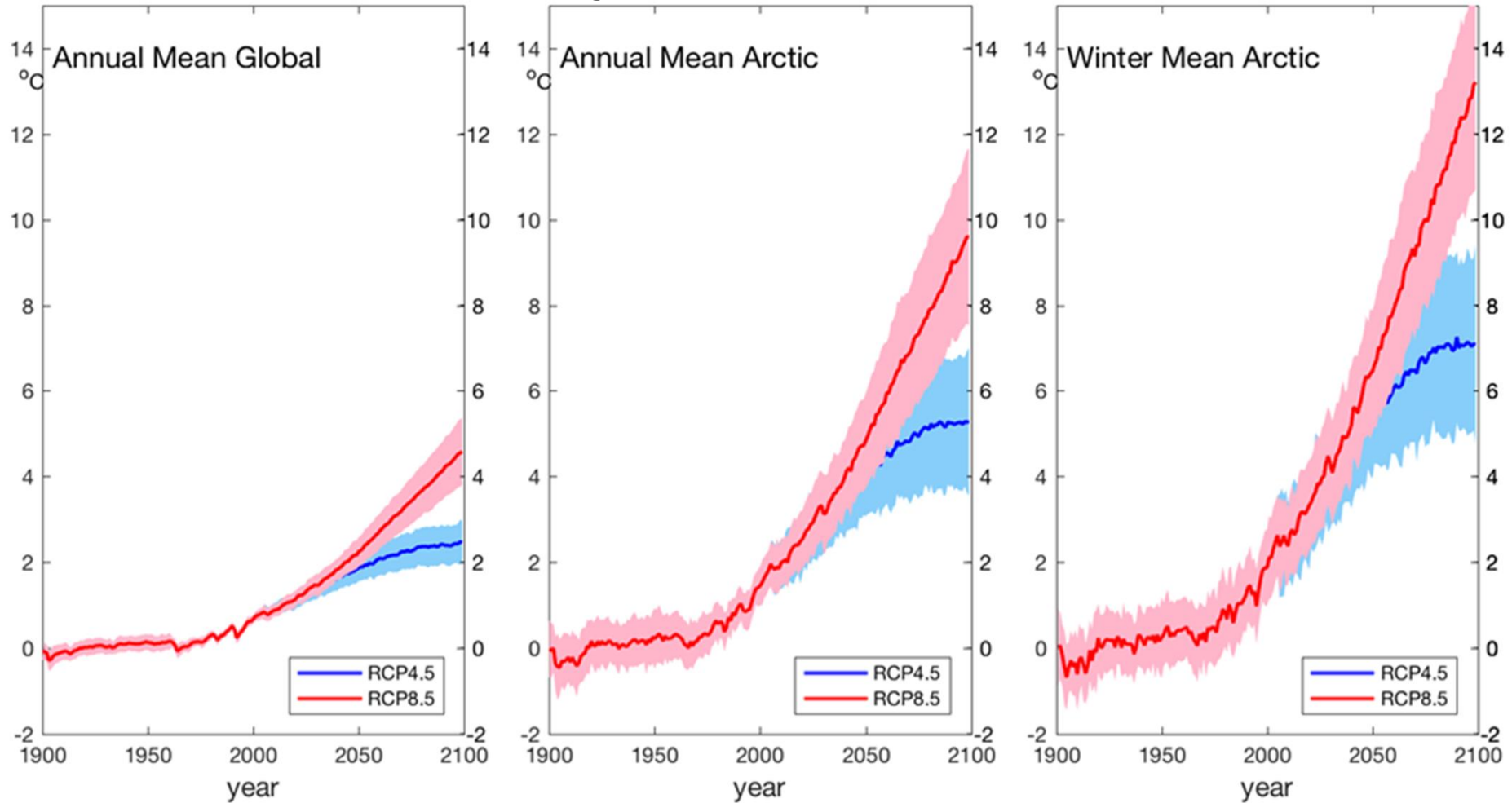


Stockholms  
universitet

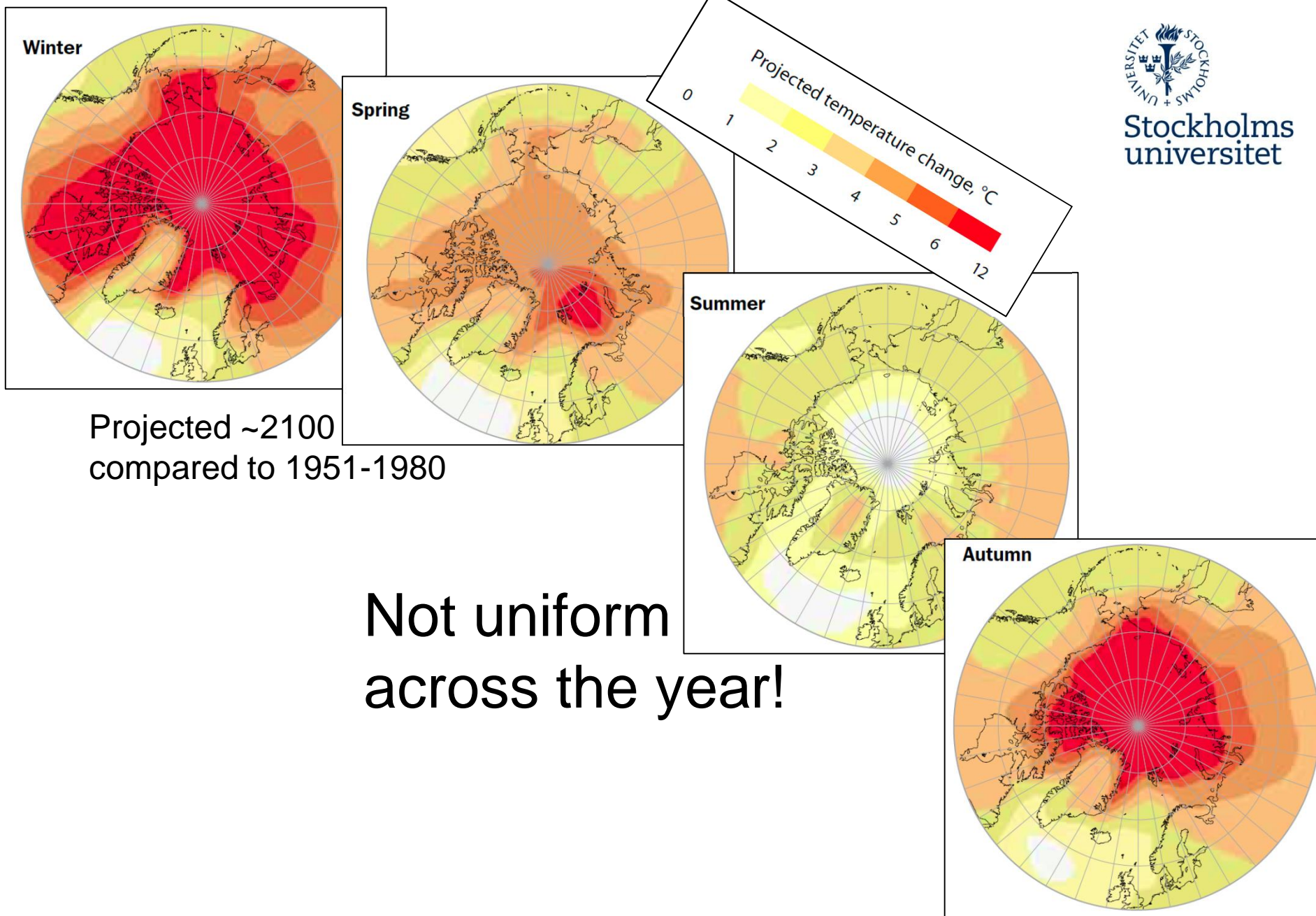


# What about the future?

## Temperature projections to 2100



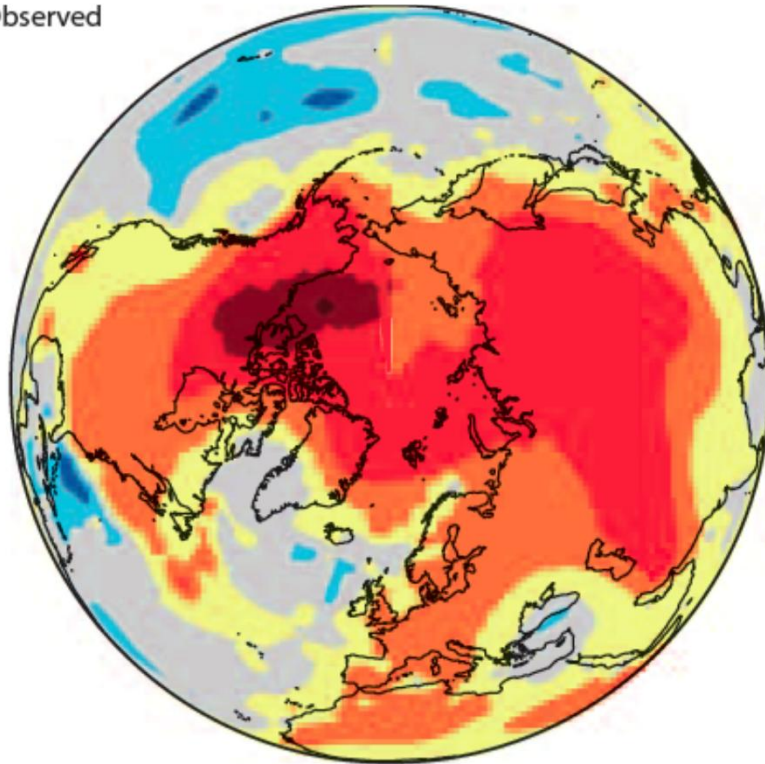




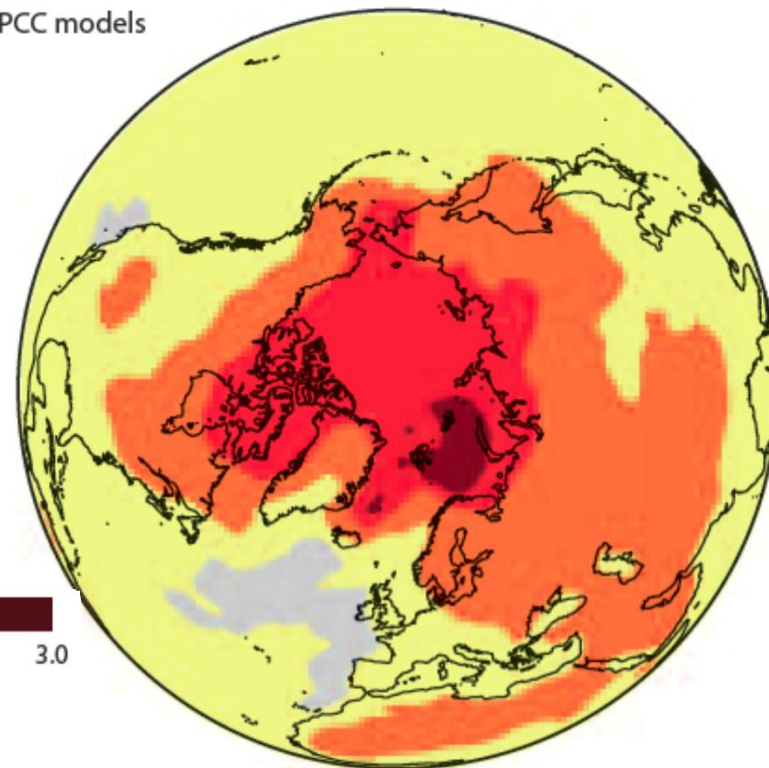
# Uncertainty from models

## Warming patterns 1957-2006

a. Observed

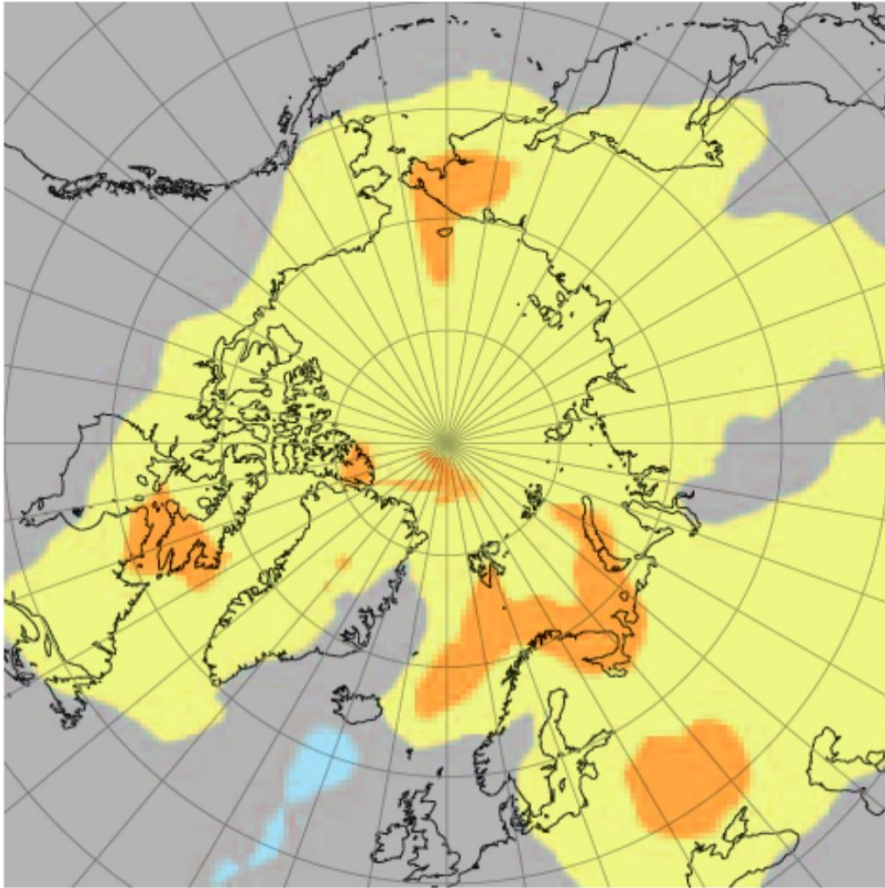


b. IPCC models



Mean temperature change, °C

Composite, 14-GCM

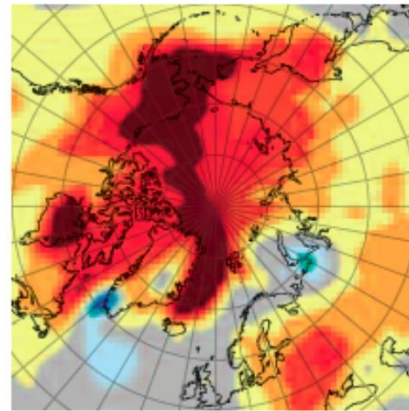


# Uncertainty from models Winter temperature change 1951-2000

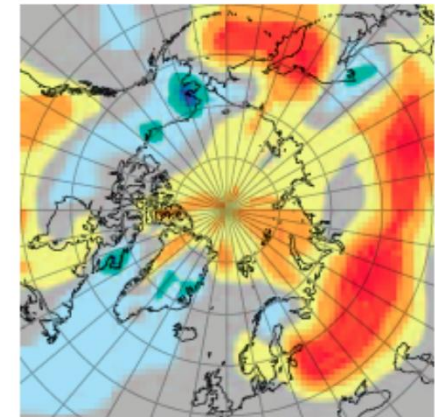


Stockholms  
universitet

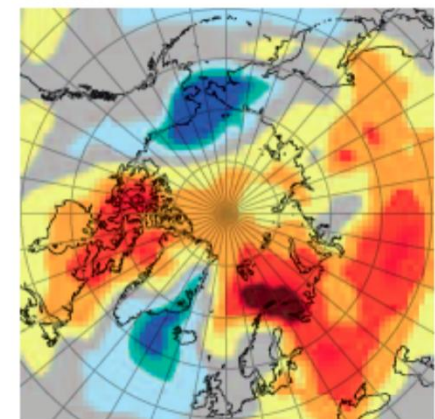
CCCMA



INMCM3

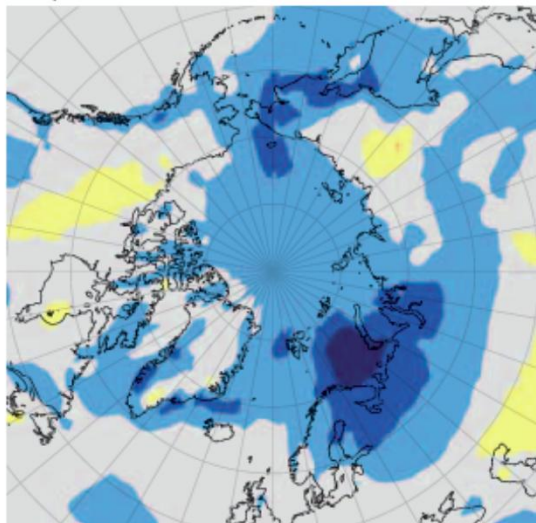


CNRM

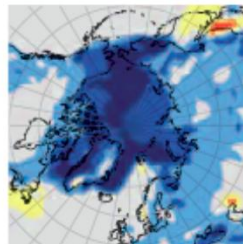


Temperature change, °C

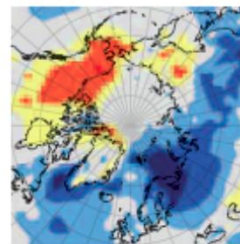
Composite



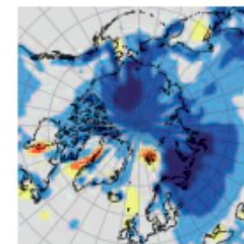
CCCMA CGCM3 1



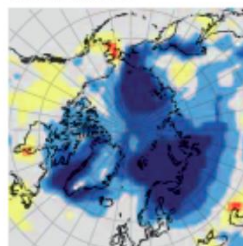
IPSL CM4



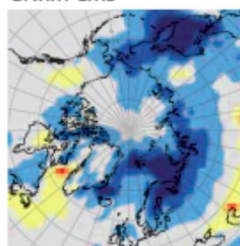
UKMO HADCM3



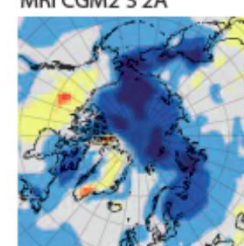
CSIRO MK3 0



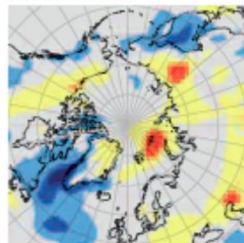
CNRM CM3



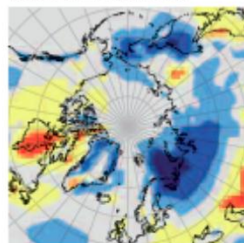
MRI CGM2 3 2A



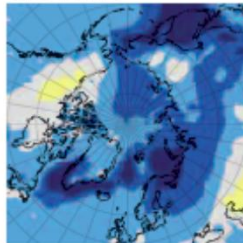
NCAR CCSM3



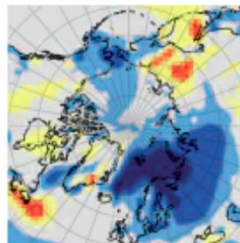
MIROC3 2 MEDRES



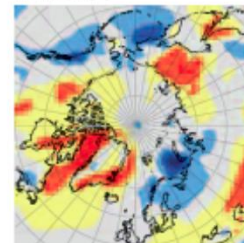
GFDL CM2 0



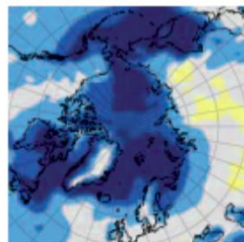
GISS MODEL E R



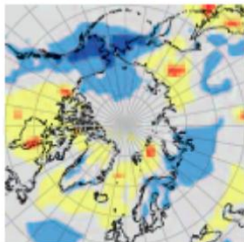
INMCM3 0



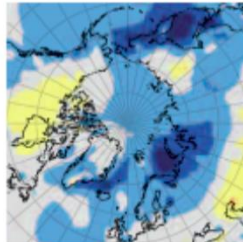
NCAR PCM1



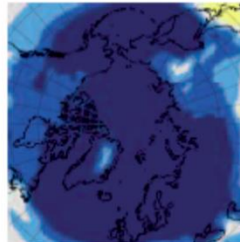
MPI ECHAM5



GFDL CM2 1

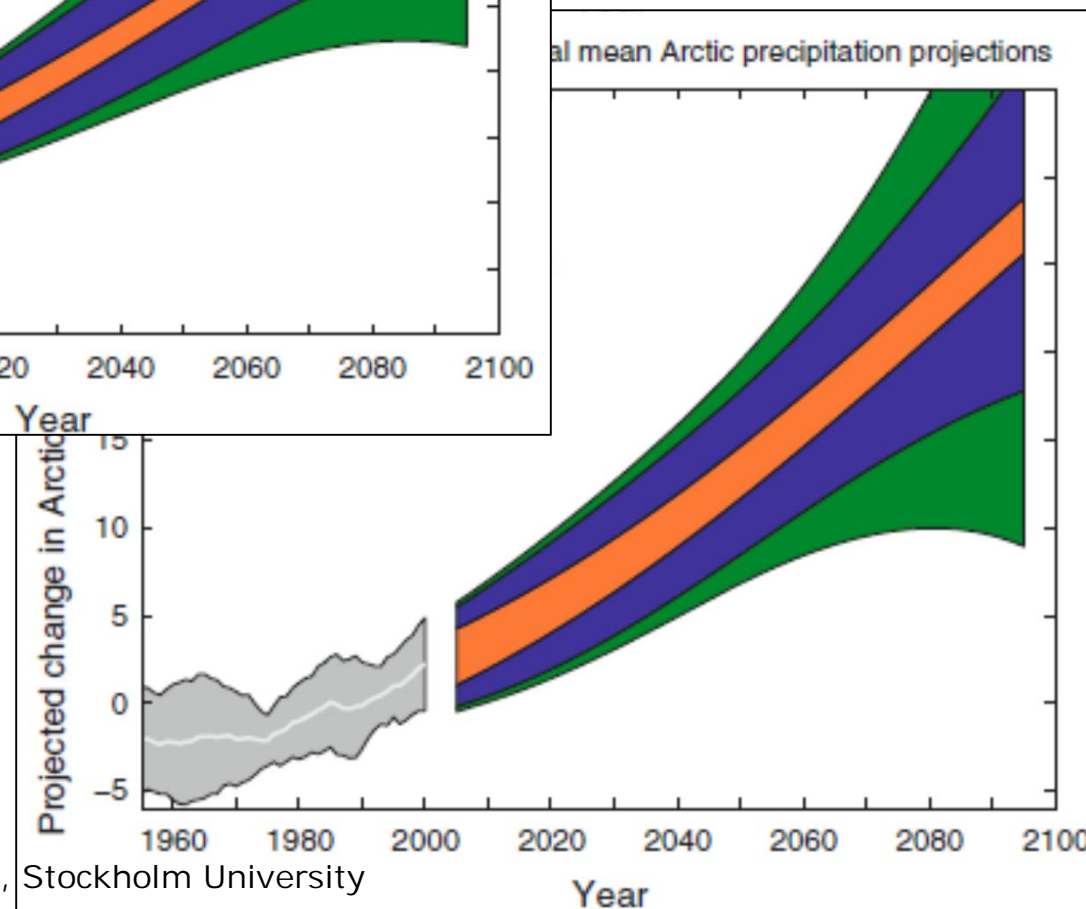
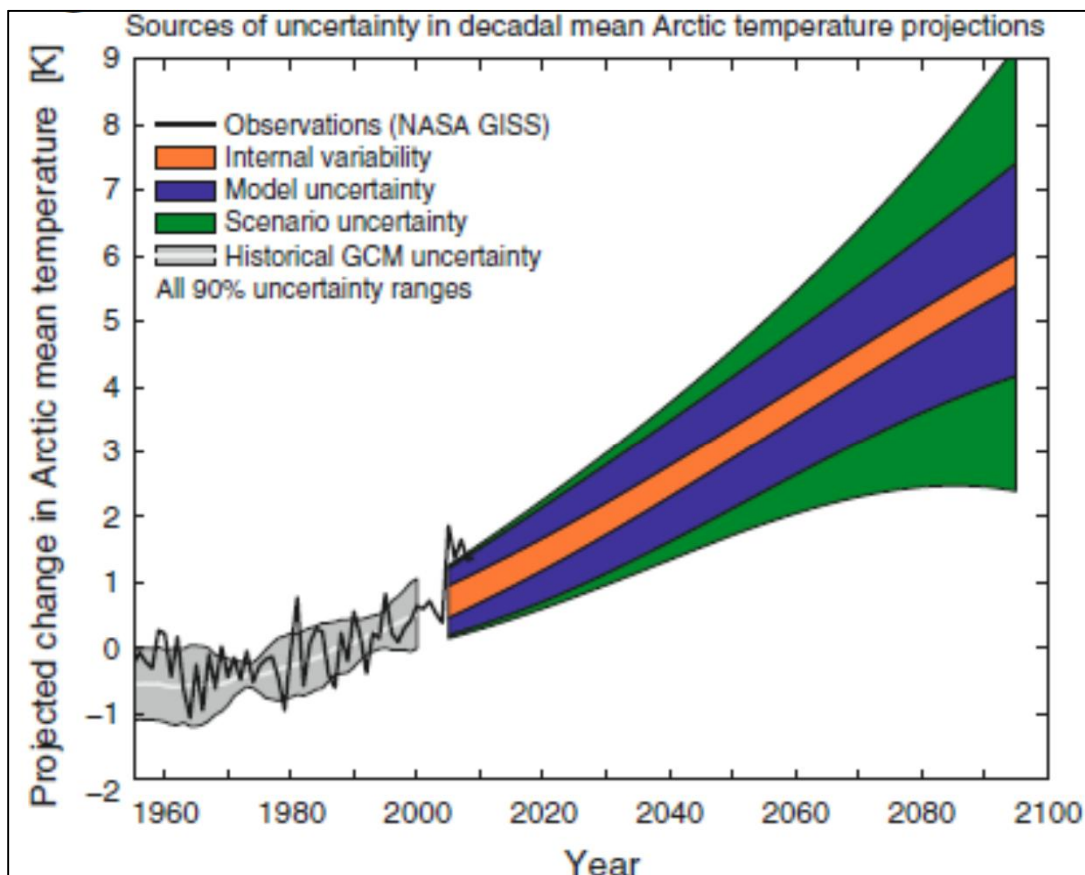


IAP FGOALS1 0 G

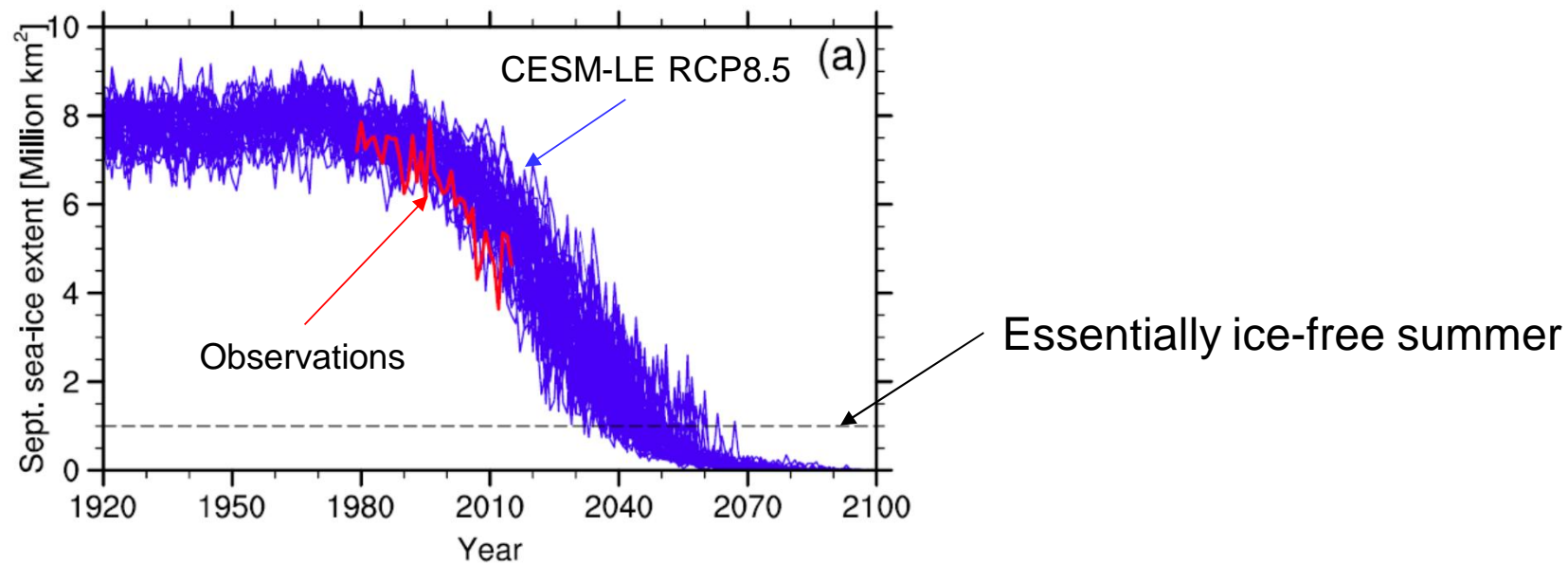


# Uncertainty from models

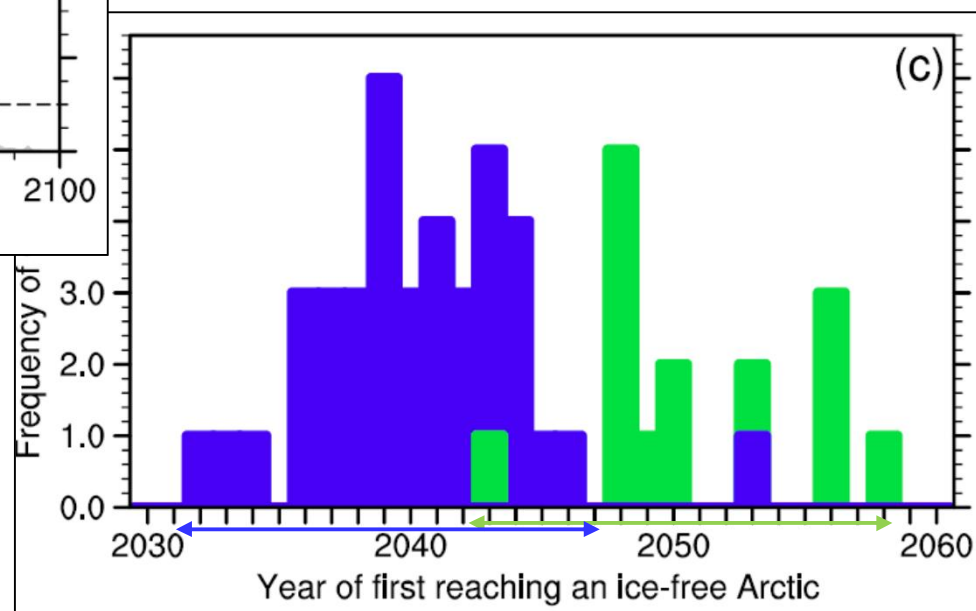
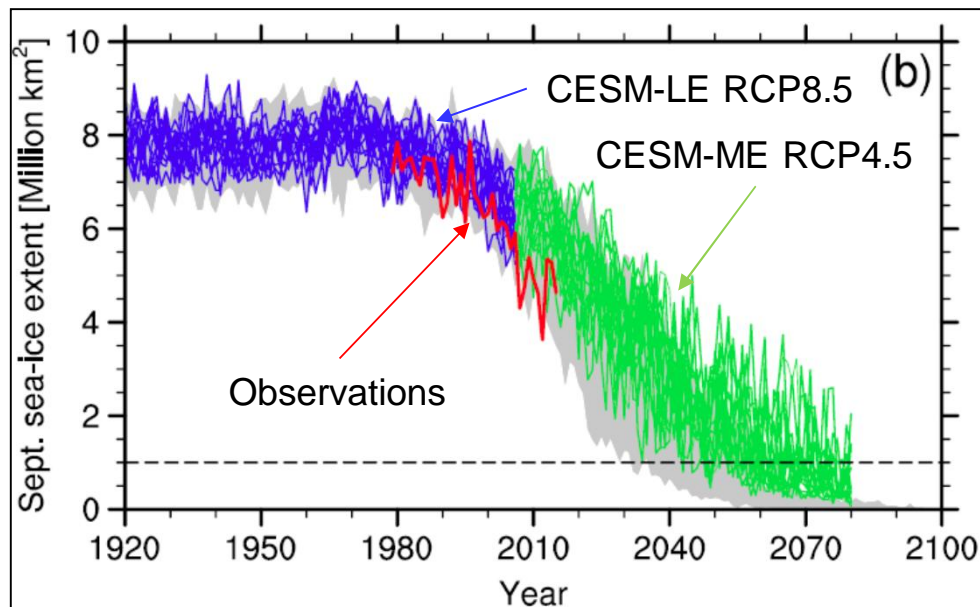
January temperature error  
1951-2000 (compared to  
ERA-Interim)



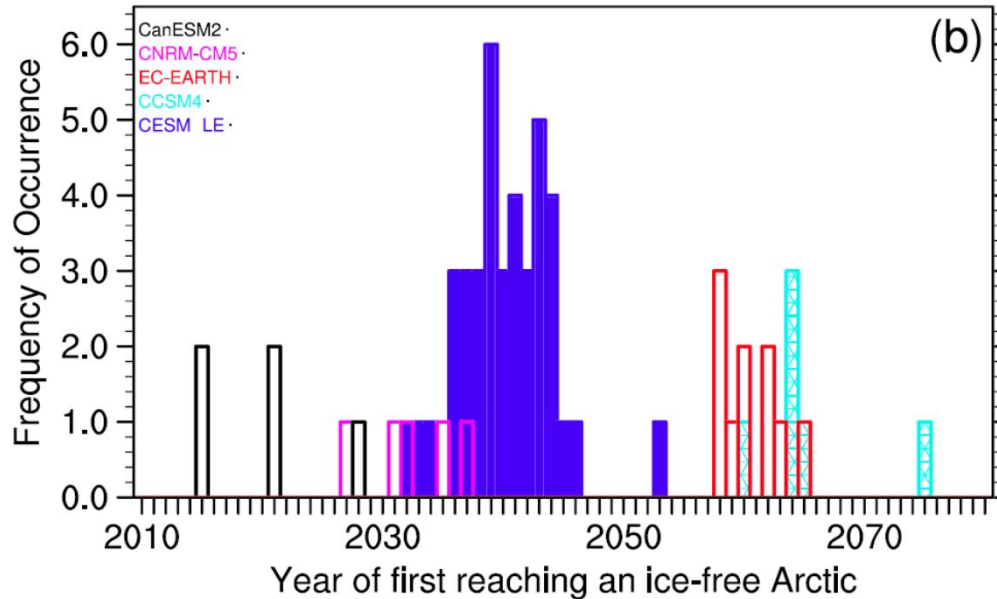
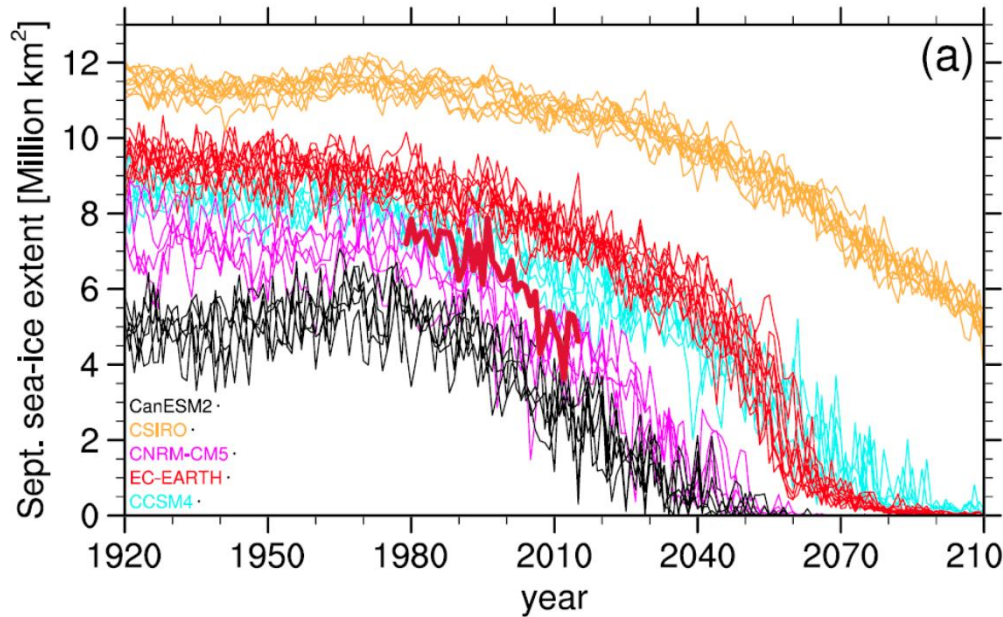
# When will summer sea ice disappear?



# When will summer sea ice disappear?

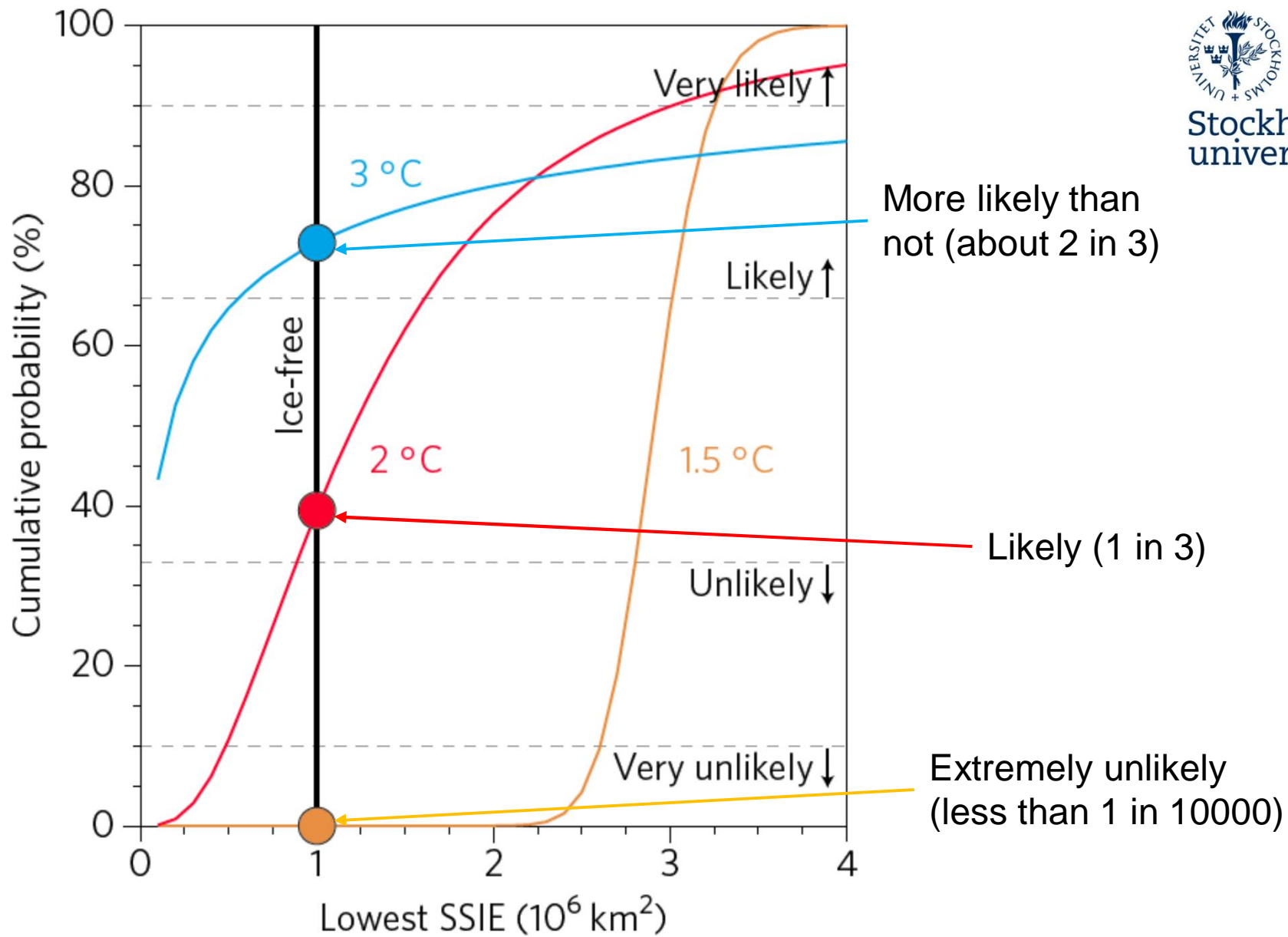


# When will summer sea ice disappear?



**Models disagree, mostly  
dependent on biases in  
current extent...**





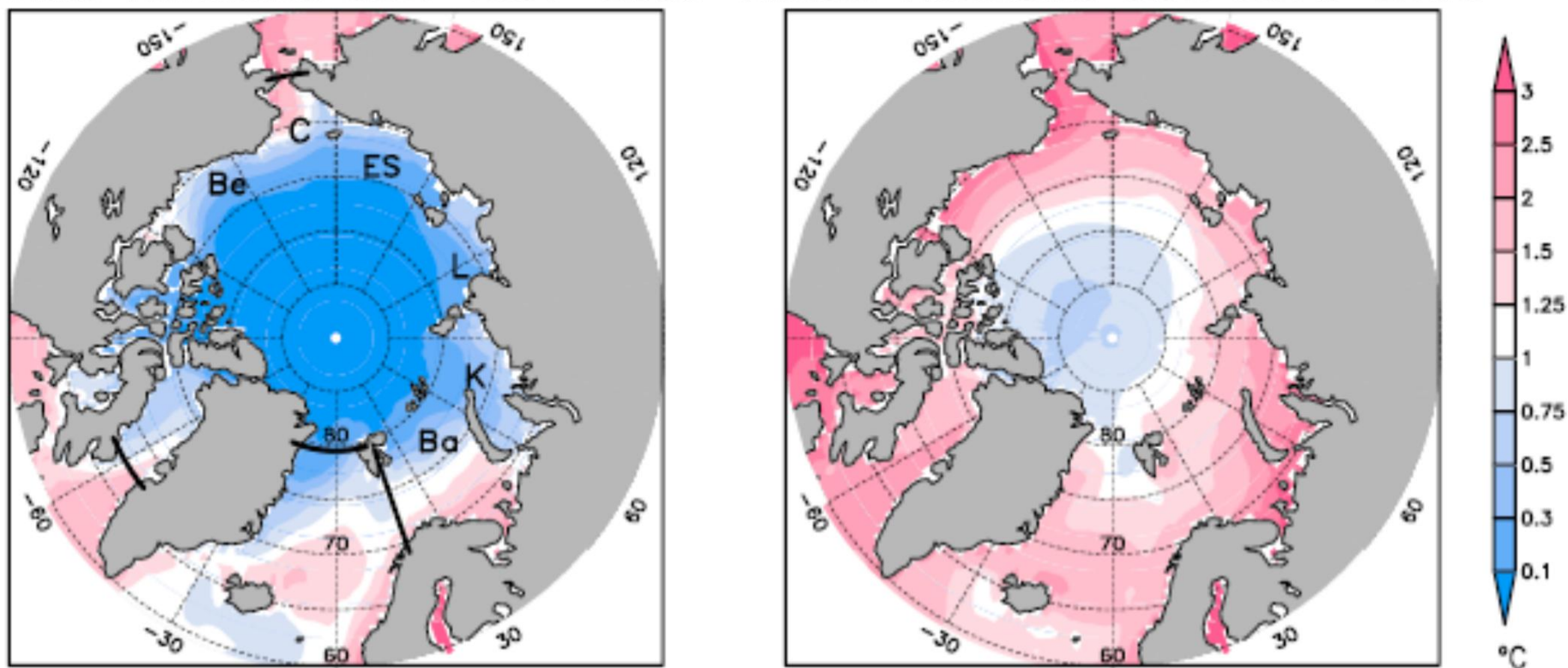
More likely than not (about 2 in 3)

Likely (1 in 3)

Extremely unlikely (less than 1 in 10000)

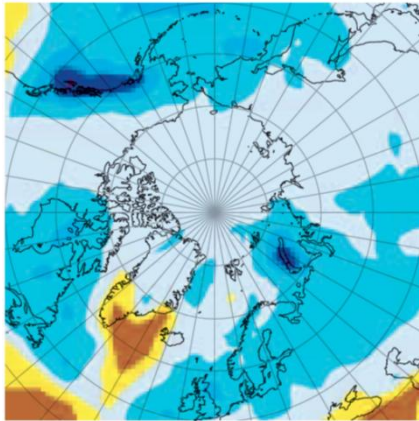
# Higher summer SST in ice-free water

Annual Harmonic SST: 1951–2000    Annual Harmonic SST: 2076–2100

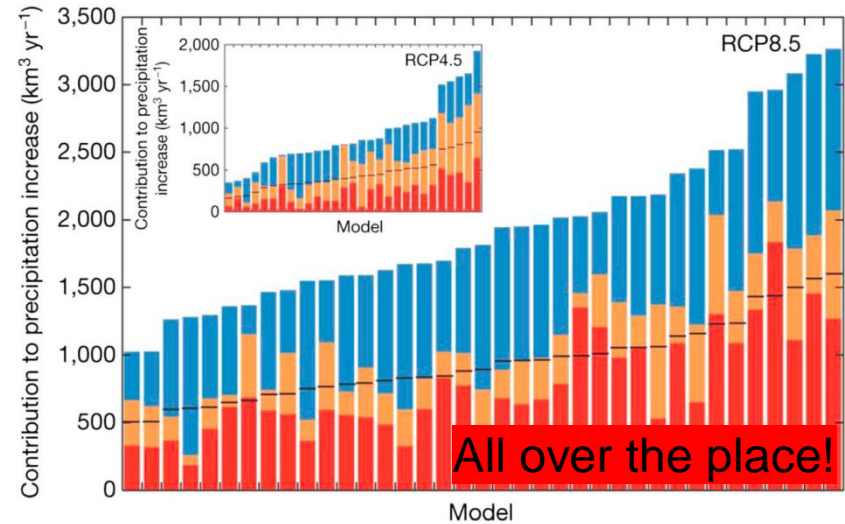
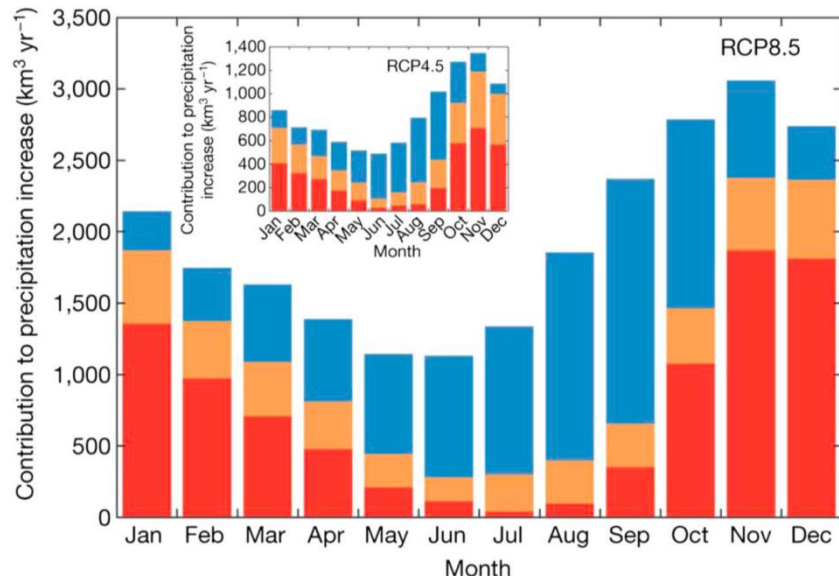
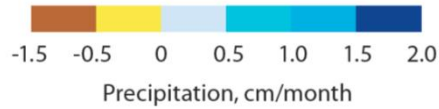
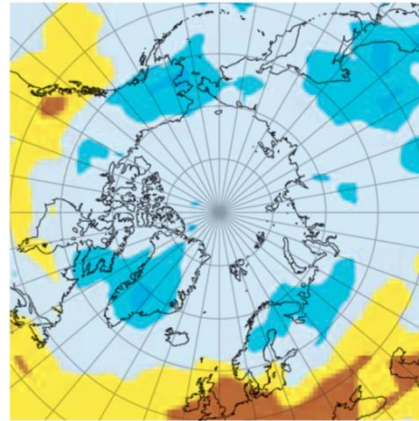


# More precipitation

Winter



Summer

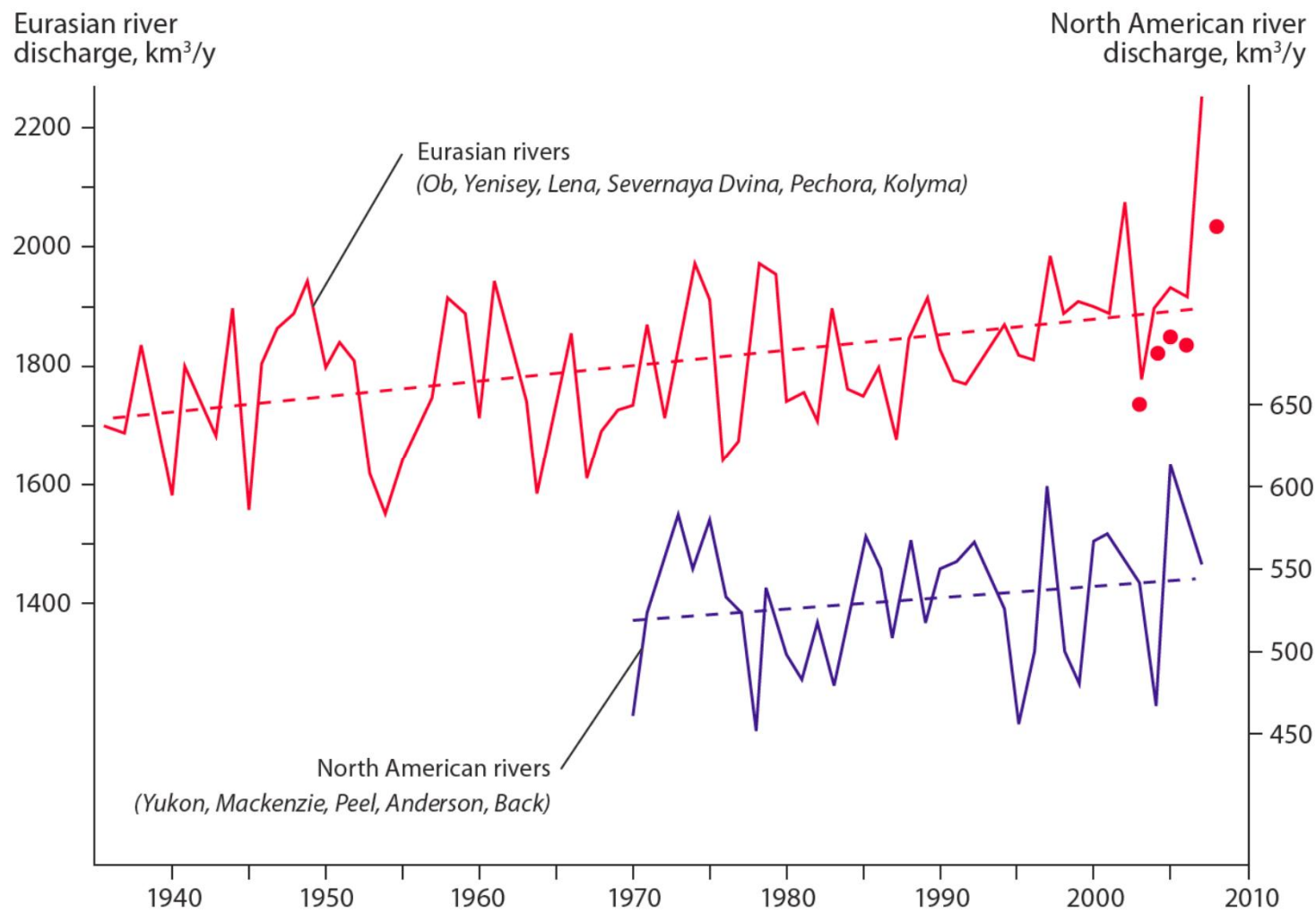


All over the place!

Transport in to the Arctic

Evaporation unrelated to sea-ice reduction

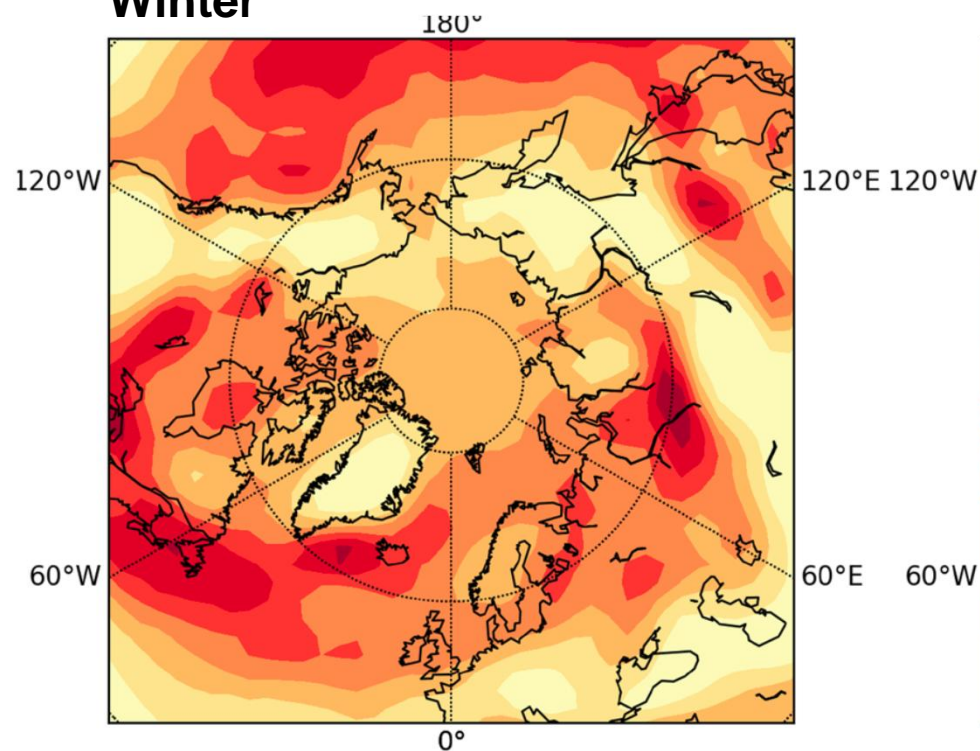
Evaporation from reduced sea-ice



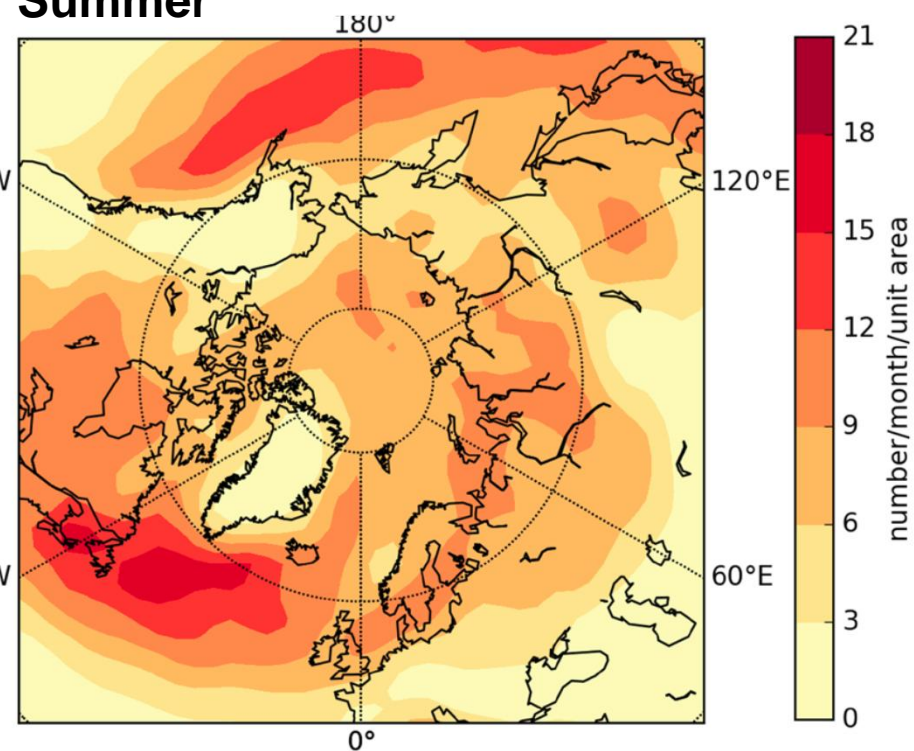
# Effects on storms

## Today

Winter



Summer

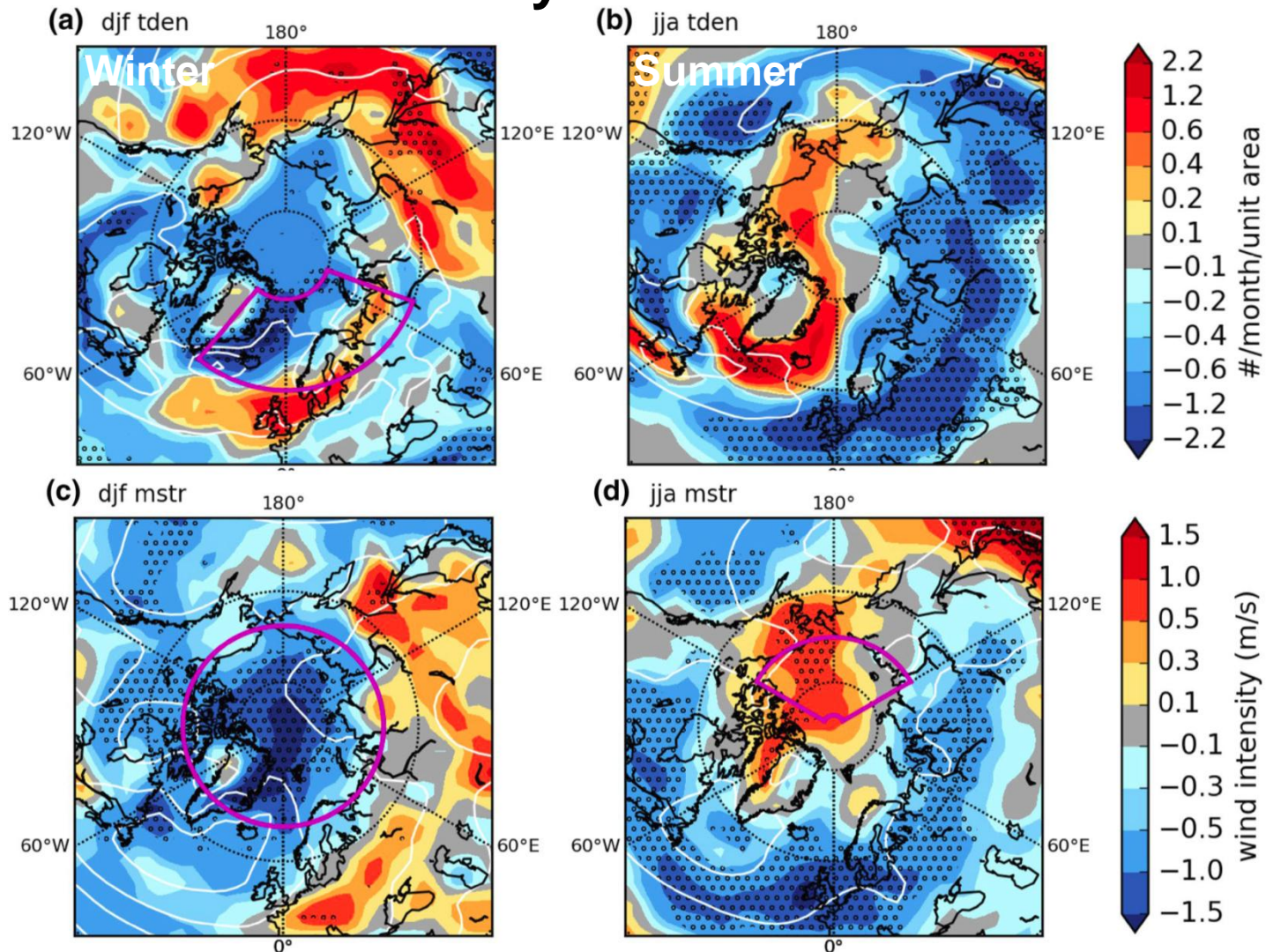


# Effects on storms

## End of the century



Stockholms universitet



# Some parting thoughts



- Climate change in the Arctic is faster and stronger than for the Earth as an average
- Temperature rises by a factor of 2-4 faster than globally
- Sea ice is disappearing in all seasons, most in summer and volume goes away faster than area
- Arctic climate change will continue to be large and fast and warming can be as large as 8-12 °C without mitigation
- Summer sea ice will at the current rate be gone by mid-century, but some may remain with mitigation keeping global warming  $< 2^{\circ}\text{C}$
- The predictive skill for Arctic climate is quite poor, mostly due to poor descriptions of processes in models
- Models agree on sign but disagree on both sensitivity of and location for change
- Only the broadest brush-strokes can be used

*Thanks for the attention!*

